

ON AN UNDESCRIBED FEMALE OF (*CLETTHARRA FLOCCIFERA*)
HAMPSON (LEPIDOPTERA :
NOCTUIDAE) WITH NOTES ON MALE GENITLIA

S.K. GHOSH
AND
MRIDULA CHAUDHURY
Zoological Survey of India, Calcutta

The authors received a lot of specimens for identification from Kalyani University, Kalyani. Out of these, two specimens of either sex of the species, *Clettharra floccifera* Hampson are interesting as the female is reported for the first time from India and the species constitutes a new locality record for West Bengal. The paper deals with the description of a female of the aforesaid species alongwith the genitalia in male.

***Clettharra floccifera* Hampson**

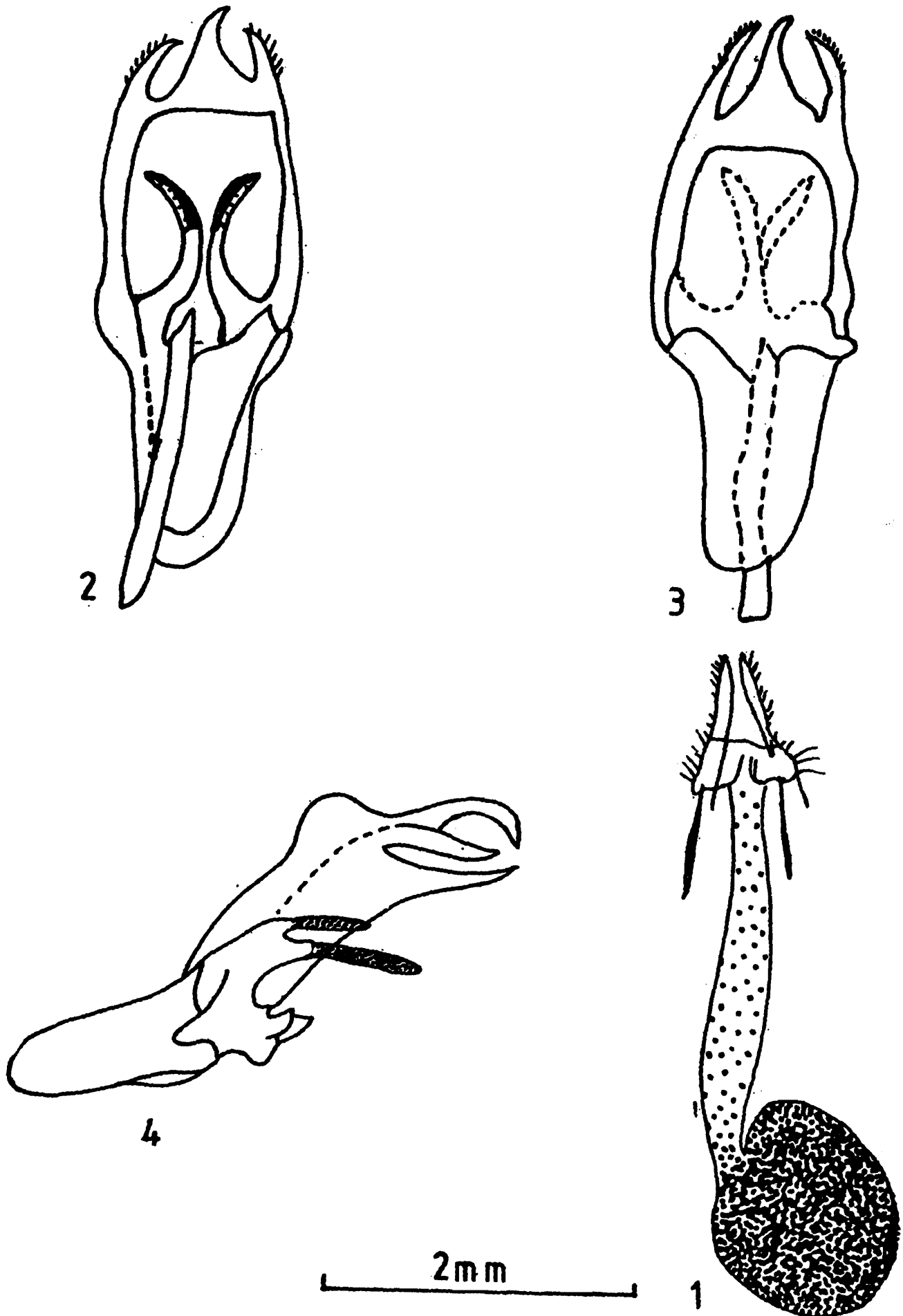
1894. *Clettharra floccifera* Hampson, *Fauna Brit. India*, Moths, 2 : 386.

Female : Antenna : simple and brown ; palpi : upturned ; collar : brown with black suffusion at the centre and on either side, thorax : brown, forewing : reddish brown ; the basal, medial and inner portion suffused with black; a tuft of raised scale in the basal portion ; faint traces of medial and postmedial oblique lines; costal area suffused with greyish black scales ventrally; R₁ from middle of cell; R₂-R₅ stalked; M₁ from upper angle of cell; M₂-M₃ from lower angle of cell; Cu_{1a} from just before angle, Cu_{1b} from middle of cell; hindwing : white but slightly suffused with fuscous apically, without tuft of hair; ventrally white excepting for a black scales on costal area; SC+R₁ arising from middle of cell ; R₅ and M₁ from upper angle of cell; M₂ and Cu_{1b} on a long stalk; M₂ arising from stalk of M₂+Cu_{1a}, Culb from middle of cell; leg : two apical tarsal segments of foreleg jet black but other segments dark brown; abdomen : anal tuft brown; female genitalia (Fig. 1) : ostium bursae and ductus bursae membranous; corpus bursae highly sclerotised and more or less ovate ; without signum; ovipositor beset with hairs; genital plate sclerotised ; posterior apodemes longer than anterior apodemes. Male genitalia (Figs. 2, 3, 4) : uncus sclerotised, hooked and gradually narrowing towards distal end; tegumen short and broad; vinculum 'U' shaped, asper simple and weakly sclerotised; anellus lobe long and highly sclerotised; juxta 'V' shaped; aedeagus simple and slender.

Material examined : India : West Bengal, Nadia district, Kalyani, Gayespur, 1 ♂, 1 ♀, date nil (Coll. M.R. Ghosh).

Wing expanse : ♂ — 24 mm, ♀ — 28 mm.

Distribution : India : West Bengal (Nadia), Nagaland (Nagas); Burma (Tenasserim).



Figs. 1-4. *Clettharra floccifera* Hampson 1. Genitalia, female 2-4. Genitalia, male 2. Ventral view 3. Dorsal view 4. Ventro-lateral view.

Remarks : Hampson (1894) described the species from Nagaland and Burma only on the basis of male specimens. The present discovery of the species from West Bengal is very interesting as it extends the range of distribution.

ACKNOWLEDGEMENT

The authors are grateful to the Director, Zoological Survey of India, Calcutta, for providing laboratory facilities and to Dr. M.R. Ghosh, Reader, Bidhan Chandra Krishi Viswavidyalaya, Kalyani, Nadia for the material.

REFERENCE

HAMPSON G.F., 1894. *Fauna of British India*, Moth. 2 : 386.