

**A NEW *CYRTOPHORA* SPIDER (ARANEAE : ARANEIDAE) FROM JABALPUR.  
MADHYA PRADESH, INDIA.**

U.A. GAJBE AND PAWAN GAJBE\*

*Zoological Survey of India, Central Regional Station, Jabalpur-482 002, (M.P)*

**INTRODUCTION**

The spiders of the genus *Cyrtophora* are very little known from India. The genus was established by Simon (1864) with the type species *Cyrtophora citricola* (Forskal). Tikader (1982) redescribed and reillustrated five species from India in *Fauna of India, Spiders* volume.

While studying the spiders of the family Araneidae collected by the second author from different localities of Jabalpur, We came across a new species of *Cyrtophora* simon which is described here.

The type specimen will be deposited in due course in the National Collection, Zoological Survey of India, Calcutta.

***Cyrtophora jabalpurensis* sp. nov.**

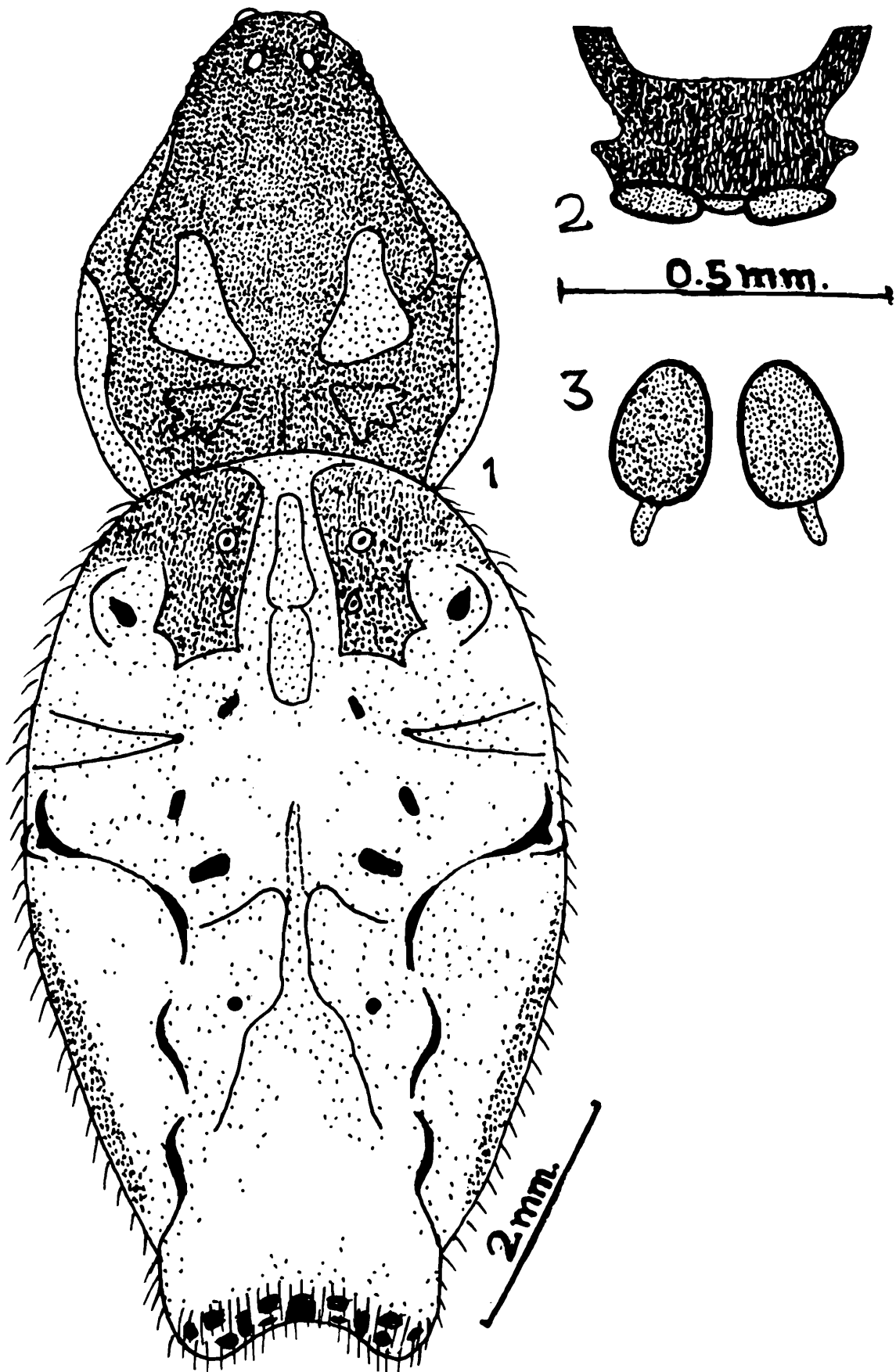
**General** : Cephalothorax and legs blackish with brownish patches, abdomen whitish brown. Total length 10.60 mm. Carapace 4.00 mm. long, 3.40 mm. wide; abdomen 7.00 mm. long, 4.30 mm. wide.

**Cephalothorax** : Slightly longer than wide, narrowing anteriorly, densely clothed with grey pubescence, thoracic region provided with a fovea trifid posteriorly; light brown patches present on mid-dorsal and lateral sides as in fig. 1. ocular quad forming a trapezium situated on an elevation, longer than wide, slightly wider in front than behind; ante-rrior median eyes larger than posterior medians; lateral eyes larger than posterior medians; lateral eyes subequal in size, a little away from each other and situated on prominent tubercles; both rows of eyes strongly recurved. Sternum heart-shaped, pointed behind, brown and clothed with hairs. Labium wider than long, dark brown with pale distal margin. Maxillae dark brown with broad distal end. Chelicerae strong, provided with prominent boss. Legs relatively long, strong and stout, densely clothed with pubescence, hairs and spines, and provided with transverse brown patches.

**Abdomen** : High anteriorly and strongly overlapping the cephalothorax, thickly clothed with pubescence and hairs. Dorsum of abdomen provided with one pair of shoulder humps, one pair of lateral humps and one pair of bifid caudal humps as in fig. 1. Anteriorly provided with one pair of blackish patches; arrangement of paired sigilla and lines as in fig. 1. Ventral side brown with

---

\* Government Autonomus Science College, Jabalpur.



**Fig. 1-3.** *Cyrtophora jabalpurensis* sp. nov.

1. Dorsal view of female, legs omitted ; 2. Epigyne ; 3. Sperma-thecae (Internal genitalia.)

a chalk white patch between epigastric furrow and spinnerets. Epigye provided with a very broad and small scape; conspicuous black patch present above the epigyne as in fig. 2. Spermathecae as in fig. 3.

*Type-specimen* : *Holotype* : Female in spirit, other details as above.

*Type-locality* : Lamhetaghat, Jabalpur, M.P. , India, Coll. *Pawan gajbe*, 21. VIII. 1997.

This species resembles *Cyrtophora citricola* Forskal but differs from it as follows : (i) Abdomen anteriorly provided with one pair of blackish patches but in *C. citricola*, abdomen provided with one pair of much larger greyish brown patches. (ii) Epigyne and spermathecae also structurally different.

#### ACKNOWLEDGEMENT

The authors are thankful to Dr. J.R.B. Alfred, Director, Zoological Survey of India, Calcutta, for facilities and to Shri K. Vioned, stenographer, of this station for typing the manuscript.

#### REFERENCE

Tikader, B.K. 1982., *Funa of India, spiders*, 2(1) : 1-289.