

**A NEW SPECIES OF SPIDER OF THE GENUS *PHILODROMUS*  
WALCKENAER (ARANEAE : PHILODROMIDAE) FROM  
MADHYA PRADESH, INDIA**

U. A. GAJBE and PAWAN GAJBE\*  
*Zoological Survey of India, Calcutta-700 020*

**INTRODUCTION**

The spiders of the family Philodromidae are little known in Indian Fauna. The genus was established by Walckenaer in 1825 with the Type-species *Philodromus aureolus* (Clerck). Tikader (1980) reillustrated and redescribed twelve species and three new species from different parts of India in *Fauna of India* series.

While studying the spider collection collected by the second author from different areas of Jabalpur city, we came across a new species of the genus *Philodromus* which is described here.

The type specimen will in due course be deposited in the National Collection, Zoological Survey of India, Calcutta.

***Philodromus pali* sp. nov.**

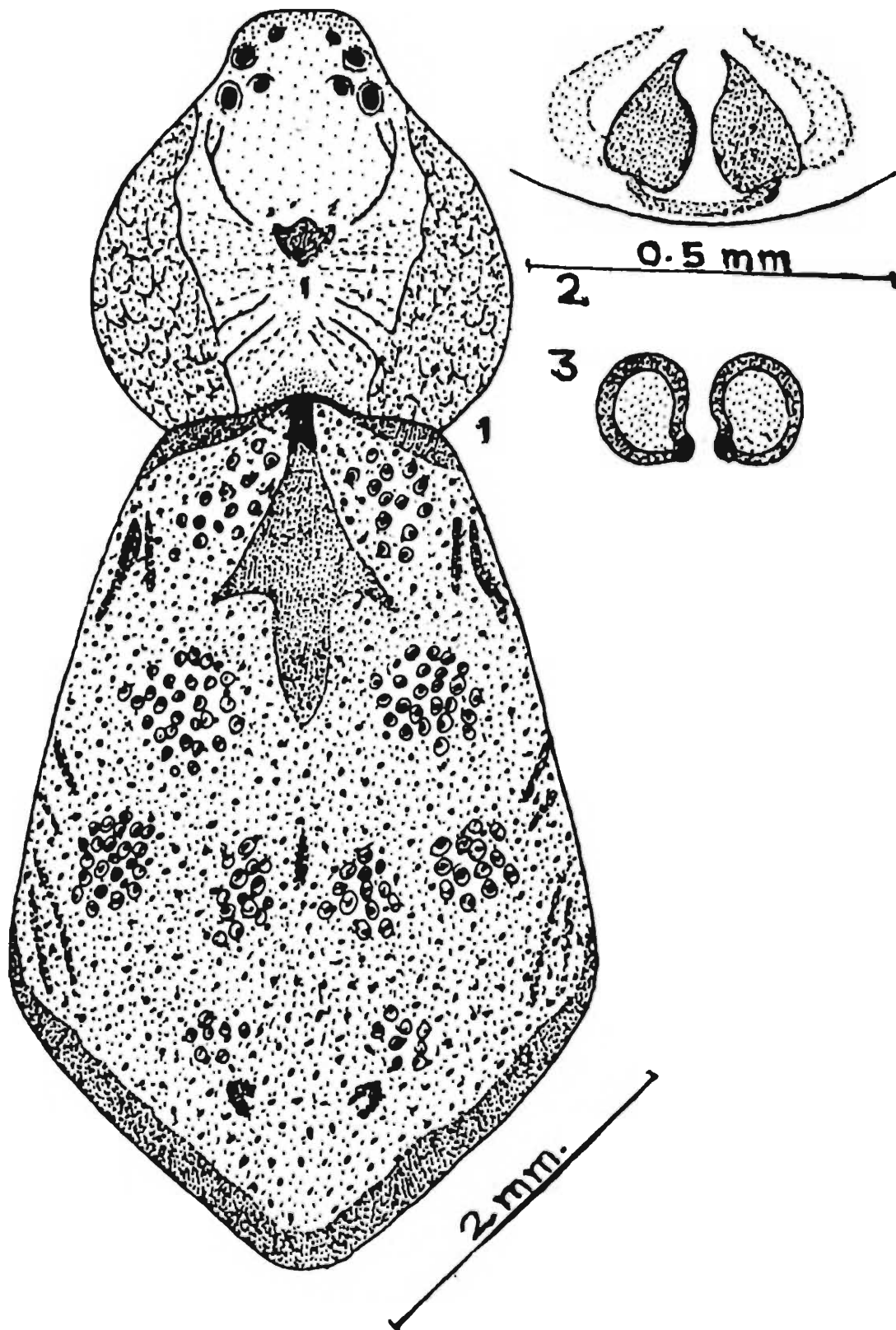
**General** : Cephalothorax, legs and abdomen brown. Total length 6.90 mm. Carapace 2.10 mm. long, 2.20 mm. wide; abdomen 4.80 mm. long, 3.30 mm. wide.

**Cephalothorax** : Slightly wider than long, narrowing anteriorly, depressed but cephalic region slightly high, lateral margins with dark brown patches as in Fig. 1. Eyes round and black, the posterior medians further from each other than the laterals. Ocular quad longer than wide and narrow in front; lateral eyes ringed with prominent tubercles. Clypeus narrow, margin provided with hairs. Sternum heart-shaped, pointed behind, pale and clothed with pubescence and hairs. Legs relatively long, II leg slightly longer than I, clothed with fine hairs and spines and provided with brown dots, Femora I provided with five dorsal spines.

**Abdomen** : Longer than wide, pentagonal, depressed, clothed with fine pubescence; a spear-shaped brown patch present on the dorsum, margins of anterior end and posterior end with brown bands, the entire dorsal surface provided with clusters of brown dots and white dots as Fig. 1. Ventral side lighter, provided with whitish dots. Epigyne as in Fig. 2. Internal genitalia as in Fig. 3.

---

\* Government Autonomous Science College, Jabalpur



Figs. 1-3 *Philodromus pali* sp. nov. - 1. Dorsal view of female, legs omitted.; 2. Epigyne.; 3. Internal genitalia.

*Type - specimen* : *Holotype* female in spirit, other details as above.

*Type - locality* : Gwarighat, Jabalpur, M.P. , India ; Coll. *Pawan Gajbe*, 2.9.1997.

This species resembles *Philodromus betrabatai* Tikader but differs from it as follows : (i) A spear-shaped brown patch present on the dorsum but in *P. betrabatai*, such a patch is absent. (ii) Dorsal surface provided with clusters of brown dots and white dots but in *P. betrabatai*, such pigmented clusters are absent. (iii) Epigyne and internal genitalia also structurally different.

#### ACKNOWLEDGEMENT

The authors are grateful to Dr. J.R.B. Alfred, Director, Zoological Survey of India, Calcutta, for facilities.

#### REFERENCE

Tikader, B. K. 1980, *Fauna of India, Spiders* 1(1) : 1 - 245.