

AN UPDATED CHECK-LIST OF THE INDIAN TRICHOPTERA ALONG WITH AN ILLUSTRATED KEY TO ITS FAMILIES

MALKIAT S. SAINI, MANDEEP KAUR & PARABHJIT K. BAJWA
Department of Zoology, Punjabi University, Patiala 147 002

INTRODUCTION

This paper covers the caddisfly fauna so far recorded from India. The work is based on the literature for which Fisher's catalogue, Schmid's revisionary works and Higler's Checklist deserve the special mention. Higler's Check-list (1992), does not contain a complete list of references and species from Schmid's recent works on Indian caddisflies. Referring the species to their exact type localities turned out to be a most cumbersome job. Due to very scattered and insufficient information no uniform pattern could be evolved. The species are simply referred to the states in which their type localities fall. In some of the cases very vague terms such as E. Himalaya, Himalaya, W. Himalaya, N. India, India, N. Bengal, C. India, S. India etc. are used, so all these are put in square brackets []. Curly brackets { } are used for those states and areas in which political boundaries have changed with the passage of time. Following Higler (1992) the subsequent locality records, authors and years are enclosed in simple brackets ().

At the end a key to the families of adult Indian Trichoptera is provided. Need of such a key was felt as none of the keys available in the literature (Wiggins, 1978; Ross, 1956; Mani, 1974) cover all the families from this region.

After Fisher's catalogue, there has been numerous changes in the taxonomic status of the caddisflies.

KEY WORDS : Check-list, Indian, Trichoptera, Family Key

Suborder ANNULIPALPIA

Family RHYACOPHILIDAE

The larvae entirely free living; construct a crude shelter of stones only at pupation. The pupa is enclosed in a darkened, separate silk cocoon. The habitat is cool running water; larvae are mainly predacious, although some are algivorous. This family is represented by two genera with 176 species from India.

Genus *Himalopsyche*

<i>Himalopsyche amītabha</i> Schmid 1966	Sikkim
<i>Himalopsyche angnorbui</i> Schmid 1963	Uttar Pradesh, Sikkim
<i>Himalopsyche bhagirathi</i> Schmid 1963	Uttar Pradesh
<i>Himalopsyche biansata</i> Kimmins 1952	Sikkim
<i>Himalopsyche digitata</i> (Martynov 1935)	{ West Bengal } West Bengal (Kimmins 1952), Uttar Pradesh, Sikkim Arunachal Pradesh (Schmid 1966)
<i>Himalopsyche dolmasampa</i> Schmid 1963	Sikkim Uttar Pradesh (Schmid 1966)
<i>Himalopsyche gyamo</i> Schmid 1963	Sikkim
<i>Himalopsyche hierophylax</i> Schmid 1966	Uttar Pradesh
<i>Himalopsyche horai</i> (Martynov 1936)	{ Punjab } Uttar Pradesh Arunachal Pradesh (Schmid 1966)
<i>Himalopsyche lanceolata</i> (Morton 1900)	Meghalaya Manipur (Schmid 1966)
<i>Himalopsyche lepcha</i> Schmid 1963	West Bengal Sikkim (Schmid 1966)
<i>Himalopsyche lungma</i> Schmid 1963	Uttar Pradesh
<i>Himalopsyche maitreya</i> Schmid 1963	Uttar Pradesh
<i>Himalopsyche malenanda</i> Schmid 1963	Sikkim Arunachal Pradesh (Schmid 1966)
<i>Himalopsyche phedongensis</i> Kimmins 1952	Sikkim
<i>Himalopsyche tibetana</i> (Martynov 1930)	Uttar Pradesh, Sikkim, Schmid 1966
<i>Himalopsyche todma</i> Schmid 1963	Uttar Pradesh
<i>Himalopsyche yatrwalla</i> Schmid 1966	Uttar Pradesh
<i>Himalopsyche yongma</i> Schmid 1963	Sikkim

Genus *Rhyacophila*

<i>Rhyacophila alticola</i> Kimmins 1953	Sikkim (Schmid 1970)
<i>Rhyacophila anatina</i> Morton 1900	Meghalaya Meghalaya, Sikkim (Kimmins 1953) Meghalaya (Schmid 1970)

<i>Rhyacophila ancestralis</i> Martynov 1935	{ Assam } Meghalaya (Schmid 1970)
<i>Rhyacophila angden</i> Schmid 1970	Sikkim
<i>Rhyacophila assimilis</i> Kimmins 1953	Manipur (Schmid 1970)
<i>Rhyacophila aureomaculata</i> Schmid 1970	Arunachal Pradesh
<i>Rhyacophila aureostigma</i> Schmid 1970	Sikkim, W. Bengal
<i>Rhyacophila bhotia</i> Schmid 1970	Uttar Pradesh
<i>Rhyacophila bhuchanadhara</i> Schmid 1970	Arunachal Pradesh
<i>Rhyacophila bicolor</i> Kimmins 1953	Manipur
<i>Rhyacophila bidens</i> Kimmins 1953	Uttar Pradesh Sikkim, Arunachal Pradesh, Manipur Uttar Pradesh (Schmid, 1970)
<i>Rhyacophila chakungpa</i> Schmid 1970	Sikkim
<i>Rhyacophila chamolungpa</i> Schmid 1970	Arunachal Pradesh
<i>Rhyacophila chandzo</i> Schmid 1970	Arunachal Pradesh
<i>Rhyacophila changpa</i> Schmid 1970	Sikkim
<i>Rhyacophila chayulpa</i> Schmid 1970	
subsp. <i>chayulpa</i> Schmid 1970	Sikkim
subsp. <i>ringmo</i> Schmid 1970	Arunachal Pradesh
subsp. <i>tsetangpa</i> Schmid 1970	Uttar Pradesh
<i>Rhyacophila chematangpa</i> Schmid 1970	Sikkim
<i>Rhyacophila chembo</i> Schmid 1970	Arunachal Pradesh
subsp. <i>lartsepa</i> Schmid 1970	Uttar Pradesh
<i>Rhyacophila chenmo</i> Schmid 1970	Manipur
<i>Rhyacophila chimdro</i> Schmid 1970	Arunachal Pradesh
<i>Rhyacophila chomoyuma</i> Schmid 1970	Manipur
<i>Rhyacophila choprai</i> Martynov 1935	Uttar Pradesh
<i>Rhyacophila chugalungpa</i> Schmid 1970	Sikkim
<i>Rhyacophila chulukpa</i> Schmid 1970	Sikkim, W. Bengal
<i>Rhyacophila chumikpa</i> Schmid 1970	Arunachal Pradesh
<i>Rhyacophila chungse</i> Schmid 1970	Manipur, Arunachal Pradesh
<i>Rhyacophila churongpa</i> Schmid 1970	Uttar Pradesh

<i>Rhyacophila curvata</i> Morton 1900	Meghalaya, Sikkim (Kimmins 1953), Manipur, Mizoram (Schmid 1970)
<i>Rhyacophila dafla</i> Schmid 1970	Arunachal Pradesh
<i>Rhyacophila dakshi</i> Schmid 1970	West Bengal, Sikkim
<i>Rhyacophila dgaldanpa</i> Schmid 1970	Arunachal Pradesh
<i>Rhyacophila dikkaravasini</i> Schmid 1970	Tamil Nadu
<i>Rhyacophila dilatata</i> Martynov 1935	{ Punjab } Uttar pradesh (Schmid, 1970)
<i>Rhyacophila dirangpa</i> Schmid 1970	Arunachal Pradesh
<i>Rhyacophila dolingpa</i> Schmid 1970	Meghalaya
<i>Rhyacophila dongkyapa</i> Schmid 1970	Manpur, Sikkim Arunachal Pradesh
<i>Rhyacophila dongre</i> Schmid 1970	Sikkim
<i>Rhyacophila dorje</i> Schmid 1970	Tamil Nadu,
<i>Rhyacophila drokpa</i>	
subsp. <i>drokpa</i> Schmid 1970	Arunachal Pradesh, Manipur
subsp. <i>gurla</i> Schmid 1970	Uttar Pradesh
subsp. <i>nyenpa</i> Schmid 1970	Sikkim
<i>Rhyacophila drosampa</i> Schmid 1970	Meghalaya
<i>Rhyacophila drotangpa</i> Schmid 1970	Sikkim
<i>Rhyacophila extensa</i> Martynov 1928	[North India] (Banks, 1931)
<i>Rhyacophila fletcheri</i> Kimmins 1952	Sikkim Arunachal Pradesh (Schmid 1970)
<i>Rhyacophila gelukpa</i> Schmid 1970	Sikkim, Arunachal Pradesh
<i>Rhyacophila gyaldzen</i> Schmid 1970	Meghalaya, Manipur
<i>Rhyacophila gyamo</i> Schmid 1970	Manipur
<i>Rhyacophila gyaspa</i> Schmid 1970	West Bengal
<i>Rhyacophila gyelbu</i> Schmid 1970	Manipur, Sikkim
<i>Rhyacophila hingstoni</i> Martynov 1930	Sikkim
<i>Rhyacophila hobsoni</i> Martynov 1930	Uttar Pradesh, Sikkim (Schmid 1970)
<i>Rhyacophila inconspicua</i> Morton 1900	Meghalaya
<i>Rhyacophila jayadurga</i> Schmid 1970	Tamil Nadu

<i>Rhyacophila kadampa</i> Schmid 1970	Manipur
<i>Rhyacophila kadaphes</i> Schmid 1959	Uttar Pradesh (Schmid 1970)
<i>Rhyacophila kagyupa</i> Schmid 1970	Arunachal Pradesh
<i>Rhyacophila kando</i> Schmid 1970	Arunachal Pradesh Sikkim, Uttar Pradesh
subsp. <i>rengma</i> Schmid 1970	Manipur
<i>Rhyacophila kangjongpa</i> Schmid 1970	Arunachal Pradesh
<i>Rhyacophila kanichka</i> Schmid 1959	Uttar Pradesh
<i>Rhyacophila karpa</i> Schmid 1970	Arunachal Pradesh
<i>Rhyacophila kashongpa</i> Schmid 1970	Manipur
<i>Rhyacophila kawachenpa</i> Schmid 1970	Arunachal Pradesh
<i>Rhyacophila kedara</i> Schmid 1970	Uttar Pradesh
<i>Rhyacophila khamakhya</i> Schmid 1970	Tamil Nadu
<i>Rhyacophila khasiorum</i> Schmid 1970	Uttar Pradesh, Sikkim Arunachal Pradesh, Meghalaya, Manipur
<i>Rhyacophila khimbarpa</i> Schmid 1970	Arunachal Pradesh
<i>Rhyacophila khiympa</i> Schmid 1970	Sikkim
<i>Rhyacophila kubra</i> Schmid 1970	Sikkim
<i>Rhyacophila kunma</i> Schmid 1970	Arunachal Pradesh
<i>Rhyacophila kusang</i> Schmid 1970	Meghalaya
<i>Rhyacophila kyadongpa</i> Schmid 1970	Sikkim
<i>Rhyacophila kyimdongpa</i> Schmid 1970	Meghalaya
<i>Rhyacophila kyungpa</i> Schmid 1970	Arunachal Pradesh
<i>Rhyacophila langdarma</i> Schmid 1970	Arunachal Pradesh
<i>Rhyacophila laptsapu</i> Schmid 1970	Sikkim
<i>Rhyacophila lepcha</i> Schmid 1970	Sikkim
<i>Rhyacophila lhabu</i> Schmid 1970	Manipur
<i>Rhyacophila lhadzongpa</i> Schmid 1970	Arunachal Pradesh
<i>Rhyacophila lhakpa</i> Schmid 1970	Uttar Pradesh
<i>Rhyacophila lhopa</i> Schmid 1970	Tamil Nadu
<i>Rhyacophila lobsang</i> Schmid 1970	Tamil Nadu
<i>Rhyacophila lonpo</i> Schmid 1970	Arunachal Pradesh

<i>Rhyacophila maitripa</i> Schmid 1970	Arunachal Pradesh
<i>Rhyacophila manipuri</i> Schmid 1970	Manipur
<i>Rhyacophila manlungpa</i> Schmid 1970	Arunachal Pradesh
<i>Rhyacophila marpa</i> Schmid 1970	Arunachal Pradesh
<i>Rhyacophila milarepa</i> Schmid 1970	Arunachal Pradesh
<i>Rhyacophila mishmica</i> Schmid 1970	Meghalaya
	Arunachal Pradesh
	(Schmid 1970)
<i>Rhyacophila monyupla</i> Schmid 1970	Arunachal Pradesh
<i>Rhyacophila mortoni</i> Kimmins 1953	Meghalaya
<i>Rhyacophila muktepa</i> Schmid 1970	Meghalaya, Manipur
<i>Rhyacophila nabochepea</i> Schmid 1970	West Bengal, Sikkim, Arunachal Pradesh
	Manipur
<i>Rhyacophila naga</i> Schmid 1970	Meghalaya
<i>Rhyacophila nagongpa</i> Schmid 1970	Manipur
<i>Rhyacophila nakpo</i> Schmid 1970	Meghalaya
<i>Rhyacophila namgyal</i> Schmid 1970	Kerala
<i>Rhyacophila narayani</i> Schmid 1970	Mamil Nadu
<i>Rhyacophila naviculata</i> Morton 1900	Tamil Nadu (Schmid 1970)
	Arunachal Pradesh
<i>Rhyacophila netongpa</i> Schmid 1970	Meghalaya
<i>Rhyacophila ngawang</i> Schmid 1970	West Bengal, Sikkim
<i>Rhyacophila ngorpa</i> Schmid 1970	Uttar Pradesh
<i>Rhyacophila ngulpa</i> Schmid 1970	Meghalaya
<i>Rhyacophila norbu</i> Schmid 1970	Sikkim
<i>Rhyacophila nyamangpa</i> Schmid 1970	Meghalaya
<i>Rhyacophila nyelungpa</i> Schmid 1970	Arunachal Pradesh
<i>Rhyacophila nyerongpa</i> Schmid 1970	Arunachal Pradesh
<i>Rhyacophila nyerpa</i> Schmid 1970	Arunachal Pradesh
<i>Rhyacophila nyukmadongpa</i> Schmid 1970	{ Punjab }, Himachal Pradesh (Kimmins 1953), Uttar Pradesh, Sikkim
<i>Rhyacophila obscura</i> Schmid 1970	(Schmid 1970)

<i>Rhyacophila parva</i> Kimmins 1953	Meghalaya
subsp. <i>parva</i> Kimmins 1953	Meghalaya (Schmid 1970)
subsp. <i>mukpo</i> Schmid 1970	Manipur
<i>Rhyacophila paurava</i> Schmid 1959	Uttar Pradesh
<i>Rhyacophila pemba</i> Schmid 1970	Meghalaya, Manipur
<i>Rhyacophila poba</i> Schmid 1970	Sikkim
<i>Rhyacophila polha</i> Schmid 1970	Arunachal Pradesh
<i>Rhyacophila procliva</i> Kimmins 1953	Manipur, Arunachal Pradesh
<i>Rhyacophila putata</i> Kimmins 1953	Meghalaya
subsp. <i>temba</i> Schmid 1970	Manipur
<i>Rhyacophila rhombica</i> Martynov 1935	{ West Bengal }
<i>Rhyacophila rongpa</i> Schmid 1970	Manipur, Sikkim
	Arunachal Pradesh
<i>Rhyacophila sakyapa</i> Schmid 1970	Uttar Pradesh
<i>Rhyacophila sanglungpa</i> Schmid 1970	Sikkim
<i>Rhyacophila scissa</i> Morton 1900	Meghalaya
	Uttar Pradesh, Sikkim
	Arunachal Pradesh
	(Schmid 1970)
subsp. <i>niyampa</i> Schmid 1970	Manipur
<i>Rhyacophila scissoides</i> Kimmins 1953	{ Punjab }, Himachal Pradesh
	Sikkim, Uttar Pradesh
	Arunachal Pradesh, Meghalaya,
	Mizoram (Schmid 1970)
<i>Rhyacophila scotina</i> Kimmins 1953	Meghalaya (Schmid 1970)
<i>Rhyacophila senggepa</i> Schmid 1970	Meghalaya
<i>Rhyacophila shakangpa</i> Schmid 1970	Uttar Pradesh
<i>Rhyacophila sherchokpa</i> Schmid 1970	Arunachal Pradesh
<i>Rhyacophila sherpa</i> Schmid 1970	Sikkim
<i>Rhyacophila shingripa</i> Schmid 1970	Sikkim
<i>Rhyacophila sikungpa</i> Schmid 1970	Uttar Pradesh
<i>Rhyacophila similis</i> Martynov 1935	Uttar Pradesh
	Uttar Pradesh (Schmid 1970)

<i>Rhyacophila spinalis</i> Martynov 1930	Uttar Pradesh, Sikkim, Arunachal Pradesh
<i>Rhyacophila stenostyla</i> Martynov 1930	Uttar Pradesh, Sikkim (Schmid 1970)
<i>Rhyacophila sumdopa</i> Schmid 1970	Manipur
<i>Rhyacophila tarkiya</i> Schmid 1970	Sikkim
<i>Rhyacophila tashapa</i> Schmid 1970	Sikkim
<i>Rhyacophila tashidingpa</i> Schmid 1970	Arunachal Pradesh
<i>Rhyacophila tecta</i> Morton 1900	{Meghalaya}, Arunachal Pradesh (Schmid 1970)
<i>Rhyacophila tengyelingpa</i> Schmid 1970	Sikkim
<i>Rhyacophila tolungpa</i> Schmid 1970	Arunachal Pradesh
<i>Rhyacophila trashipa</i> Schmid 1970	Manipur
<i>Rhyacophila trulungpa</i> Schmid 1970	Uttar Pradesh
<i>Rhyacophila tsering</i> Schmid 1970	Kerala
<i>Rhyacophila tshiringpa</i> Schmid 1970	Sikkim
<i>Rhyacophila tshogpa</i> Schmid 1970	Sikkim
<i>Rhyacophila tsiudmarpo</i> Schmid 1970	Arunachal Pradesh
<i>Rhyacophila tsona</i> Schmid 1970	Manipur
<i>Rhyacophila tsongkhapa</i> Schmid 1970	Sikkim
<i>Rhyacophila tungkorpa</i> Schmid 1970	Sikkim
<i>Rhyacophila tungpa</i> Schmid 1970	Uttar Pradesh
<i>Rhyacophila ugyenpa</i> Schmid 1970	Meghalaya
<i>Rhyacophila wangpo</i> Schmid 1970	West Bengal
<i>Rhyacophila yarhungpa</i> Schmid 1970	Arunachal Pradesh
<i>Rhyacophila yigrongpa</i> Schmid 1970	Sikkim
<i>Rhyacophila yipung</i> Schmid 1970	Manipur
<i>Rhyacophila yishepa</i> Schmid 1970	Sikkim
<i>Rhyacophila yonggyapa</i> Schmid 1970	Manipur
<i>Rhyacophila yullha</i> Schmid 1970	Sikkim
<i>Rhyacophila chungpa</i> Schmid 1970	Arunachal Pradesh Uttar Pradesh

Family HYDROBIOSIDAE

Larvae freeliving; construct a crude shelter of stones only at pupation. The pupa is enclosed in a darkened silk cocoon. The habitat is running waters. Larvae are predacious as in Rhyacophilidae, but generally they are more tolerant to higher temperatures. This family is represented by single genus with 9 species from India.

Genus *Apsilochorema*

<i>Apsilochorema annandalei</i> Martynov 1935	Punjab, Himachal Pradesh, Sikkim, Uttar Pradesh Manipur (Schmid 1970)
<i>Apsilochorema dakchinam</i> Schmid 1970	Tamil Nadu
<i>Apsilochorema hrasvam</i> Schmid 1970	Manipur
<i>Apsilochorema indicum</i> Ulmer 1905	{ Punjab }
<i>Apsilochorema natibhinam</i> Schmid 1970	Meghalaya
<i>Apsilochorema tanum</i> Schmid 1970	Manipur
<i>Apsilochorema tigmatejanam</i> Schmid 1970	Uttar Pradesh, Sikkim
<i>Apsilochorema utchtchunam</i> Schmid 1970	Manipur
<i>Apsilochorema vaneyam</i> Schmid 1970	Arunchal Pradesh Sikkim

Family HYDROPTILIDAE

The habitat is running and standing waters, with larvae usually feeding on the cell contents of filamentous algae or diatoms. These insects are known as purse-case makers. The larval case consists of sand, algae, or other plant material, or silk alone. This family is represented by five genera with 47 species from India.

Genus *Moselyella*

<i>Moselyella violacea</i> (Morton 1902)	Meghalaya (also Maxwell-Lefroy 1909) (also Martynov 1935)
--	---

Genus *Orthotrichia*

<i>Orthotrichia avicularis</i> Kimmins 1951	Bihar
<i>Orthotrichia extensa</i> Martynov 1935	[Central India]

Genus *Oxydroptila*

Oxydroptila furcata Martynov 1935 [Central India]

Genus *Oxyethira*

Oxyethira harpagella Kimmins 1951 Meghalaya

Oxyethira ramosa Martynov 1936 [Central India]

Genus *Stactobia*

Stactobia balin Schmid 1983 West Bengal

Stactobia ballur Schmid 1983 Meghalaya

Stactobia beor Schmid 1983 Arunachal Pradesh, Uttar Pradesh,
West Bengal

Stactobia beren Schmid 1983 Arunachal Pradesh

Stactobia bifur Schmid 1983 Meghalaya

Stactobia bofur Schmid 1983 Manipur

Stactobia calin Schmid 1983 Arunachal Pradesh, Uttar Pradesh,
West Bengal, Sikkim

Stactobia dain Schmid 1983 Meghalaya, Mizoram

Stactobia dori Schmid 1983 Uttar Pradesh

Stactobia durin Schmid 1983 West Bengal

Stactobia dwalin Schmid 1983 Uttar Pradesh

Stactobia dwalur Schmid 1983 West Bengal

Stactobia froki Schmid 1983 Arunachal Pradesh

Stactobia gimli Schmid 1983 Uttar Pradesh

Stactobia gloin Schmid 1983 Uttar Pradesh

Stactobia glwili Schmid 1983 Arunachal Pradesh

Stactobia grolin Schmid 1983 Meghalaya

Stactobia huor Schmid 1983 Arunachal Pradesh

West Bengal

Stactobia hurin Schmid 1983 Uttar Pradesh

Arunachal Pradesh

Stactobia loki Schmid 1983 Uttar Pradesh

Stactobia loni Schmid 1983 Meghalaya

Stactobia morettii Schmid 1959 Uttar Pradesh (Schmid 1983)

<i>Stactobia naili</i> Schmid 1983	West Bengal
<i>Stactobia nalin</i> Schmid 1983	Arunachal Pradesh
<i>Stactobia nielseni</i> Schmid 1959	Uttar Pradesh (Schmid 1983)
<i>Stactobia noldi</i> Schmid 1983	Uttar Pradesh
<i>Stactobia nori</i> Schmid 1983	Uttar Pradesh
<i>Stactobia oin</i> Schmid 1983	Uttar Pradesh
<i>Stactobia ori</i> Schmid 1983	Sikkim
<i>Stactobia radovanovichi</i> Schmid 1959	Uttar Pradesh (Schmid 1983)
<i>Stactobia schmidi</i> Kimmins 1964	Uttar Pradesh (Schmid 1983)
<i>Stactobia smoli</i> Schmid 1983	Meghalaya
<i>Stactobia snori</i> Schmid 1983	West Bengal, Sikkim
	Arunachal Pradesh
<i>Stactobia snufi</i> Schmid 1983	Sikkim
<i>Stactobia teldi</i> Schmid 1983	Uttar Pradesh
<i>Stactobia throrin</i> Schmid 1983	Uttar Pradesh
<i>Stactobia thrain</i> Schmid 1983	Sikkim
<i>Stactobia throhir</i> Schmid 1983	Manipur
<i>Stactobia throli</i> Schmid 1983	Sikkim
<i>Stactobia thror</i> Schmid 1983	Arunachal Pradesh
<i>Stactobia tjederi</i> Schmid 1983	Uttar Pradesh (Schmid 1983)
<i>Stactobia tuor</i> Schmid 1983	Manipur

Family GLOSSOSOMATIDAE

The larval case consists of small rock fragments; The habitat is running waters; larvae eat algae and fine organic particles from the upper surface of rocks. This family is represented by three genera with 22 species from India.

Genus *Agapetus*

<i>Agapetus kashmirensis</i> Mimmins 1953	Jammu & Kashmir
<i>Agapetus sindis</i> Kimmins 1953	Jammu & Kashmir
<i>Agapetus triangularis</i> Martynov 1935	Uttar Pradesh

Genus *Glossosoma*

<i>Glossosoma abhikara</i> Schmid 1959	Uttar Pradesh (Schmid 1971)
<i>Glossosoma abhisares</i> Schmid 1971	Uttar Pradesh

<i>Glossosoma ambhi</i> Schmid 1959	Uttar Pradesh (Schmid 1971)
<i>Glossosoma atchintitam</i> Schmid 1971	Arunachal Pradesh
<i>Glossosoma bahukantakam</i> Schmid 1971	Arunachal Pradesh
<i>Glossosoma caudadum fissum</i> Mart. 1935	Uttar Pradesh, Himachal Pradesh (Kimmins 1953); U.P., Sikkim, Arunachal Pradesh, Manipur, Schmid (1971)
<i>Glossosoma confluens</i> Kimmins 1953	Arunachal Pradesh Manipur (Schmid 1971)
<i>Glossosoma dentatum</i> McLachlan 1875	Himachal Pradesh (Martynov 1935), Arunachal Pradesh (Schmid 1971)
subsp. <i>akhandam</i> Schmid 1971	Sikkim, Arunachal Pradesh, Manipur, Meghalaya
<i>Glossosoma dirghakantakam</i> Schmid 1971	Arunachal Pradesh, Sikkim
<i>Glossosoma heliakreya</i> Schmid 1959	Uttar Pradesh (Schmid 1971)
<i>Glossosoma hemantajam</i> Schmid 1971	Meghalaya, Manipur
<i>Glossosoma kamarasikam</i> Schmid 1971	Sikkim, Arunachal Pradesh
<i>Glossosoma kchinam</i> Schmid 1971	Sikkim
<i>Glossosoma krichnarunam</i> Schmid 1971	Arunachal Pradesh
<i>Glossosoma moselyi</i> Kimmins 1953	Jammu & Kashmir
<i>Glossosoma nigroroseum</i> Schmid 1971	Sikkim
<i>Glossosoma vaneyam</i> Schmid 1971	Arunachal Pradesh
<i>Glossosoma varjakantakam</i> Schmid 1971	Uttar Pradesh, Sikkim Arunachal Pradesh, Manipur, Meghalaya

Genus *Synagapetus*

<i>Synagapetus himalayanus</i> Martynov 1935	West Bengal
--	-------------

Family STENOPSYCHIDAE

Larvae live in stout shelters of stones fastened together with silken meshes on submerged rocks in strong currents of rivers. This family is represented by single genus with 14 species from India.

Genus *Stenopsyche*

<i>Stenopsyche alamkrita</i> Schmid 1969	Arunachal Pradesh
<i>Stenopsyche apiguna</i> Schmid 1969	Arunachal Pradesh, Manipur
<i>Stenopsyche benaventi</i> Navas 1934	Maharashtra, Bihar (Martynov 1935), West Bengal Bihar, Meghalaya, Manipur, Andhra Pradesh (Schmid 1969)
<i>Stenopsyche dirghajihvi</i> Schmid 1969	Arunachal Pradesh, Sikkim
<i>Stenopsyche dvyankopayukta</i> Schmid 1969	Meghalaya
<i>Stenopsyche eurycephala</i> Navas 1935	Maharashtra
(According to Schmid 1969, <i>S. benaventi</i>)	
<i>Stenopsyche furcatula</i> Martynov 1935	[Central India]
(According to Schmid 1969, probably <i>S. benaventi</i>)	
	Madhya Pradesh, Bihar (Schmid 1969)
<i>Stenopsyche griseipennis</i> McLachlan 1866	[East India] (Martynov 1935) { Assam } (McLachlan 1871), Sikkim, { West Bengal } (Betten 1909), { Bengal } (Martynov 1935), Uttar Pradesh, Sikkim, Manipur, Arunachal Pradesh, Meghalaya (Schmid 1969)
[non <i>pallidipennis</i> (Schmid 1969)]	Sikkim, { Assam } (Kimmins 1958)
<i>Stenopsyche haimavatika</i> Schmid 1969	Uttar Pradesh, Sikkim, Meghalaya, Arunachal Pradesh
<i>Stenopsyche himalayana</i> Martynov 1926	{ Assam }, Jammu & Kashmir (Ulmer 1907) Uttar Pradesh, Sikkim, Meghalaya (Schmid 1969)
<i>Stenopsyche khasia</i> Kimmins 1958	Meghalaya
<i>Stenopsyche pallidipennis</i> Martynov 1926	{ Assam } { Assam } (Martynov 1930)

<i>Stenopsyche splendida</i> Martynov 1935	Maharashtra Andhra Pradesh (Schmid 1969)
<i>Stenopsyche similis</i> Ulmer 1927	{ West Bengal } Sikkim (Martynov 1930) { Panjab }, { Bengal } (Martynov 1935) Punjab, Uttar Pradesh, Arunachal Pradesh, Sikkim (Schmid 1969)

Family PHILOPOTAMIDAE

Larvae live within elongate, sack like silken nets of exceedingly fine mesh openings on the undersides of rocks or sometimes on vertical rock faces in spring seeps. The habitat is running waters, where algae and fine organic particles filtered by larval nets are swept up by the specialized membranous labrum. This family is represented by seven genera with 66 species from India.

Genus *Chimarra*

<i>Chimarra aberrans</i> Martynov 1935	[India]
<i>Chimarra assamensis</i> Kimmins 1957	Meghalaya
<i>Chimarra bicolor</i> Navas 1932	Maharashtra
<i>Chimarra crepidata</i> Kimmins 1957	Meghalaya
<i>Chimarra digitata</i> Martynov 1935	{ Punjab }, Uttar Pradesh
<i>Chimarra fusca</i> Kimmins 1957	Meghalaya
<i>Chimarra henryi</i> Kimmins 1957	Karnataka
<i>Chimarra khasia</i> Kimmins 1957	Meghalaya
<i>Chimarra kumaonensis</i> Martynov 1935	Uttar Pradesh
<i>Chimarra minuta</i> Martynov 1935	{ Punjab }
<i>Chimarra pilosella</i> Navas 1931	Maharashtra (also Martynov 1935)
<i>Chimarra pulla</i> Navas 1932	Maharashtra (also Martynov 1935)

Genus *Doloclanes*

<i>Doloclanes acteon</i> Schmid 1991	Madras
<i>Doloclanes alcmeon</i> Schmid 1991	Madras
<i>Doloclanes anactorion</i> Schmid 1991	Madras
<i>Doloclanes dexileon</i> Schmid 1991	Assam
<i>Doloclanes dolophion</i> Schmid 1991	Uttar Pradesh

<i>Doloclanes endymion</i> Schmid 1991	Assam
<i>Doloclanes hyperion</i> Schmid 1991	Assam
<i>Doloclanes ixion</i> Schmid 1991	Assam
<i>Doloclanes nyctimon</i> Schmid 1991	Assam
<i>Doloclanes timoleon</i> Schmid 1991	Assam

Genus *Dolomyia*

<i>Dolomyia kalmasa</i> Schmid 1991	Assam
-------------------------------------	-------

Genus *Dolophilodes*

<i>Dolophilodes indica</i> Martynov 1935	{ Punjab }
<i>Dolophilodes tibetana</i> Kimmins 1955	Jammu & Kashmir

Genus *Dolopsyche*

<i>Dolopsyche kalmasita</i> Schmid 1991	Assam
---	-------

Genus *Gunungiella*

<i>Gunungiella achtadachi</i> Schmid 1968	Meghalaya
<i>Gunungiella achtami</i> Schmid 1968	Meghalaya
<i>Gunungiella achtatrimchi</i> Schmid 1968	Arunachal Pradesh
<i>Gunungiella achtavimchi</i> Schmid 1968	Andhra Pradesh
<i>Gunungiella bodhidharma</i> Schmid 1968	Uttar Pradesh (Schmid 1968)
<i>Gunungiella chodachi</i> Schmid 1968	West Bengal
<i>Gunungiella chotrimchi</i> Schmid 1968	Arunachal Pradesh
<i>Gunungiella chovimchi</i> Schmid 1968	Karnataka
<i>Gunungiella dachami</i> Schmid 1968	Kerala
<i>Gunungiella dvadachi</i> Schmid 1968	Karnataka
<i>Gunungiella dvatrimchi</i> Schmid 1968	Kerala
<i>Gunungiella dvitiya</i> Schmid 1968	Uttar Pradesh, Sikkim, Meghalaya, Manipur, Arunachal Pradesh
<i>Gunungiella ekadachi</i> Schmid 1968	Kerala
<i>Gunungiella ekatrimchi</i> Schmid 1968	Karnataka
<i>Gunungiella ekavimchi</i> Schmid 1968	Meghalaya
<i>Gunungiella navadachi</i> Schmid 1968	Manipur
<i>Gunungiella navami</i> Schmid 1968	Meghalaya, Manipur

<i>Gunungiella navavimchi</i> Schmid 1968	Karnataka
<i>Gunungiella pachtchima</i> Schmid 1968	Arunachal Pradesh
<i>Gunungiella pantchadachi</i> Schmid 1968	Manipur
<i>Gunungiella pantchami</i> Schmid 1968	Meghalaya
<i>Gunungiella pantchatrimchi</i> Schmid 1968	Mizoram
<i>Gunungiella prathama</i> Schmid 1968	Arunachal Pradesh, Uttar Pradesh, Sikkim
<i>Gunungiella saptami</i> Schmid 1968	Meghalaya
<i>Gunungiella saptatrimchi</i> Schmid 1968	Arunachal Pradesh
<i>Gunungiella saptavimchi</i> Schmid 1968	Tamil Nadu
<i>Gunungiella tchaturdachi</i> Schmid 1968	Manipur
<i>Gunungiella tchaturti</i> Schmid 1968	Arunachal Pradesh
<i>Gunungiella tchaturtimchi</i> Schmid 1968	Kerala
<i>Gunungiella tridachi</i> Schmid 1968	Tamil Nadu
<i>Gunungiella tritrimchi</i> Schmid 1968	Arunachal Pradesh
<i>Gunungiella tritiya</i> Schmid 1968	Manipur
<i>Gunungiella trivimchi</i> Schmid 1968	Assam
<i>Gunungiella ulmeri</i> Schmid 1949	Arunachal Pradesh (Schmid 1968)
<i>Gunungiella vimchi</i> Schmid 1968	Arunachal Pradesh

Genus *Wormaldia*

<i>Wormaldia ephestion</i> Schmid 1991	Madras
<i>Wormaldia melanion</i> Schmid 1991	Sikkim
<i>Wormaldia nigrosea</i> Schmid 1991	Assam
<i>Wormaldia relictata</i> (Martynov 1935)	{Bengal}
<i>Wormaldia therapion</i> Schmid 1991	Assam

Family XIPHOCENTRONIDAE

Larvae construct tubes of silk and sand, frequently extending above the water surface on wet substrates. The habitat is small streams. This family is represented by five genera with 46 species from India.

Genus *Abaria*

<i>Abaria achwatirtha</i> Schmid 1982	Tamil Nadu, Kerala, Karnataka
<i>Abaria devavrata</i> Schmid 1982	Meghalaya

<i>Abaria dusyanta</i> Schmid 1982	Tamil Nadu, Kerala
<i>Abaria madhavi</i> Schmid 1982	Arunachal Pradesh
<i>Abaria margaritifera</i> Schmid 1982	Uttar Pradesh, Sikkim, West Bengal, Manipur, Arunachal Pradesh, Meghalaya, Tamil Nadu, Mizoram (Schmid 1982)
<i>Abaria puru</i> Schmid 1982	Uttar Pradesh
<i>Abaria richika</i> Schmid 1982	Sikkim
<i>Abaria uchinara</i> Schmid 1982	Sikkim
<i>Abaria yakcha</i> Schmid 1982	Meghalaya

Genus *Cnodocentron*

<i>Cnodocentron devayani</i> Schmid 1982	Meghalaya
<i>Cnodocentron girika</i> Schmid 1982	Arunachal Pradesh
<i>Cnodocentron tchaturbhujia</i> Schmid 1982	Sikkim, Arunachal Pradesh
<i>Cnodocentron vrisaparvan</i> Schmid 1982	Arunachal Pradesh

Genus *Drepanocentron*

<i>Drepanocentron abhimayu</i> Schmid 1982	Sikkim
<i>Drepanocentron birghu</i> Schmid 1982	Arunachal Pradesh, Meghalaya
<i>Drepanocentron brihadratha</i> Schmid 1982	Arunachal Pradesh
<i>Drepanocentron brihaspati</i> Schmid 1982	Mizoram
<i>Drepanocentron citrangada</i> Schmid 1982	Arunachal Pradesh
<i>Drepanocentron dacharatha</i> Schmid 1982	Sikkim
<i>Drepanocentron druhyu</i> Schmid 1982	Manipur
<i>Drepanocentron dvaravati</i> Schmid 1982	Manipur
<i>Drepanocentron haryachwa</i> Schmid 1982	West Bengal
<i>Drepanocentron nahucha</i> Schmid 1982	Manipur
<i>Drepanocentron sarmichta</i> Schmid 1982	Manipur
<i>Drepanocentron satrajita</i> Schmid 1982	Meghalaya
<i>Drepanocentron satyavati</i> Schmid 1982	Meghalaya
<i>Drepanocentron turvasi</i> Schmid 1982	Manipur
<i>Drepanocentron ugrasena</i> Schmid 1982	Manipur
<i>Drepanocentron vicitravirya</i> Schmid 1982	Sikkim, Arunachal Pradesh
<i>Drepanocentron yayati</i> Schmid 1982	Meghalaya, Manipur, Mizoram

Genus *Melanotrichia*

<i>Melanotrichia chichupala</i> Schmid 1982	Kerala
<i>Melanotrichia dhanajaya</i> Schmid 1982	Meghalaya
<i>Melanotrichia drupada</i> Schmid 1982	Manipur
<i>Melanotrichia ikchvaku</i> Schmid 1982	Meghalaya
<i>Melanotrichia jamadagni</i> Schmid 1982	Manipur
<i>Melanotrichia janamejaya</i> Schmid 1982	Meghalaya
<i>Melanotrichia kachika</i> Schmid 1982	Manipur
<i>Melanotrichia pachupati</i> Schmid 1982	Tamil Nadu, Kerala, Karnataka
<i>Melanotrichia prajapati</i> Schmid 1982	Arunachal Pradesh
<i>Melanotrichia radhasuta</i> Schmid 1982	Meghalaya
<i>Melanotrichia singularis</i> Ulmer 1906	[S. India] Tamil Nadu, Kerala, Karnataka (Schmid 1982)
<i>Melanotrichia uparichara</i> Schmid 1982	Meghalaya
<i>Melanotrichia vasudeva</i> Schmid 1982	Meghalaya
<i>Melanotrichia vichvamisra</i> Schmid 1982	Arunachal Pradesh, Meghalaya and most probably Assam
<i>Melanotrichia yadu</i> Schmid 1982	Arunachal Pradesh

Genus *Proxiphocentron*

<i>Proxiphocentron prathamajam</i> Schmid 1982	Sikkim
--	--------

Family PSYCHOMYIIDAE

Larvae construct fixed meandering tubes of silk, covered with particles of sand and detritus, on rocks or logs. They feed on periphyton and fine organic particles from the substrate. The habitat is mainly cool running waters; some species occur in lakes. This family is represented by seven genera with 79 species from India.

Genus *Eoneureclipsis*

<i>Eoneureclipsis akrichalakchmi</i> Schmid 1972	Manipur
<i>Eoneureclipsis varsikiyja</i> Schmid 1972	Arunachal Pradesh

Genus *Khandalina*

<i>Khandalina acuta</i> Navas 1934	Maharashtra
------------------------------------	-------------

Genus *Lype*

Lype dhumravarna Schmid 1972
Manipur, West Bengal, Arunachal Pradesh, Mizoram, Uttar Pradesh

Genus *Paduniella*

Paduniella amurensis Martynov 1934 [C. India] (Martynov 1935)

Paduniella fissa Martynov 1935 Bihar

Genus *Psychomyia*

Psychomyia anaktujuh Malicky 1995 Uttar Pradesh, Manipur
Psychomyia arefinae Schmid 1997 Uttar Pradesh
Psychomyia armitagei Schmid 1997 Assam, Meghalaya
Psychomyia asvagosha Schmid 1961 Uttar Pradesh, West Bengal, Sikkim
Psychomyia botosaneanui Schmid 1997 Assam, Manipur
Psychomyia curriei Schmid 1997 Madras
Psychomyia denisi Schmid 1997 Assam, Manipur
Psychomyia dugpa Schmid 1975 Sikkim, Uttar Pradesh
Psychomyia flinti Schmid 1997 Kerala
Psychomyia galli Schmid 1997 Assam, Meghalaya
Psychomyia giboni Schmid 1997 Mysore
Psychomyia gonzaleizi Schmid 1997 Assam
Psychomyia higleri Schmid 1997 Uttar Pradesh
Psychomyia holzenthali Schmid 1997 Meghalaya
Psychomyia itoae Schmid 1997 Assam, Meghalaya
Psychomyia ivanovi Schmid 1997 Madras
Psychomyia karkii Malicky 1994 Uttar Pradesh, Sikkim, Assam
Psychomyia kumanskii Schmid 1997 Assam, Manipur
Psychomyia kumari Schmid 1997 Uttar Pradesh
Psychomyia kuranishi Schmid 1997 Assam, Meghalaya
Psychomyia levandovae Schmid 1997 Assam
Psychomyia lii Schmid 1997 Assam
Psychomyia maharaksa Schmid 1961 Uttar Pradesh
Psychomyia mahayinna Schmid 1961 Uttar Pradesh
Psychomyia malickyi Schmid 1997 Uttar Pradesh

<i>Psychomyia meyi</i> Schmid 1997	Kerala
<i>Psychomyia monicae</i> Schmid 1997	Assam
<i>Psychomyia moretti</i> Schmid 1997	Madras
<i>Psychomyia morsei</i> Schmid 1997	Mysore
<i>Psychomyia nevoissi</i> Schmid 1997	Assam, Manipur
<i>Psychomyia nimmoi</i> Schmid 1997	Assam, Meghalaya
<i>Psychomyia nogradiae</i> Schmid 1997	Madras
<i>Psychomyia purthi</i> Martynov 1935	Mysore, Madya Pradesh
<i>Psychomyia reshi</i> Schmid 1997	Madras
<i>Psychomyia schetlerae</i> Schmid 1997	Uttar Pradesh
<i>Psychomyia scottae</i> Schmid 1997	Sikkim
<i>Psychomyia spurisi</i> Schmid 1997	Assam
<i>Psychomyia suni</i> Schmid 1997	Assam
<i>Psychomyia sykorai</i> Schmid 1997	Madras
<i>Psychomyia tiani</i> Schmid 1997	Assam, Meghalaya
<i>Psychomyia tobiasi</i> Schmid 1997	West Bengal
<i>Psychomyia tomaszewskii</i> Schmid 1997	Madras
<i>Psychomyia unzickeri</i> Schmid 1997	Assam, Manipur
<i>Psychomyia vaillanti</i> Schmid 1997	Assam
<i>Psychomyia wangi</i> Schmid 1997	West Bengal, Sikkim
<i>Psychomyia weaveri</i> Schmid 1997	Assam, Meghalaya
<i>Psychomyia wardi</i> Schmid 1997	Assam, Manipur
<i>Psychomyia wellsae</i> Schmid 1997	Kerala
<i>Psychomyia wigginsi</i> Schmid 1997	Assam, Meghalaya
<i>Psychomyia yangae</i> Schmid 1997	Assam, Meghalaya
<i>Psychomyia levanidovae</i> Schmid 1997	Assam

Genus *Psychomyiella*

<i>Psychomyiella pruthii</i> Martynov 1935	[C. India]
--	------------

Genus *Tinodes*

<i>Tinodes achtachastra</i> Schmid 1972	Sikkim
<i>Tinodes adhricta</i> Schmid 1972	Arunachal Pradesh
<i>Tinodes akanda</i> Schmid 1972	Meghalaya

<i>Tinodes akantaka</i> Schmid 1972	Uttar Pradesh
<i>Tinodes alpachastra</i> Schmid 1972	Sikkim
<i>Tinodes analoka</i> Schmid 1972	Tamil Nadu
<i>Tinodes anibhrita</i> Schmid 1972	West Bengal, Meghalaya Arunachal Pradesh
<i>Tinodes aprakrita</i> Schmid 1972	Meghalaya, Mizoram
<i>Tinodes arala</i> Schmid 1972	Meghalaya
<i>Tinodes atichastra</i> Schmid 1972	Sikkim
<i>Tinodes chrinidhara</i> Schmid 1972	Arunachal Pradesh
<i>Tinodes dirghachastra</i> Schmid 1972	Arunachal Pradesh
<i>Tinodes lavidhara</i> Schmid 1972	Manipur
<i>Tinodes natichastra</i> Schmid 1972	West Bengal
<i>Tinodes prisatkayukta</i> Schmid 1972	Manipur, Uttar Pradesh
<i>Tinodes prithulavi</i> Schmid 1972	Uttar Pradesh
<i>Tinodes pullulans</i> Navas 1932	Maharashtra, Meghalaya Mizoram Manipur, Karnataka, Madya Pradesh (Schmid 1972)
<i>Tinodes utchringita</i> Schmid 1972	Meghalaya
<i>Tinodes utchunalinga</i> Schmid 1972	Uttar Pradesh
<i>Tinodes vadichayudha</i> Schmid 1972	Tamil Nadu
<i>Tinodes vristchika</i> Schmid 1972	Arunachal Pradesh

Family DIPSEUDOPSIDAE

Larvae construct branching tubes of silk covered with sand or silt. They often also burrow in soft sediments and feed on fine organic particles and algae filtered from current passing through the tube by meshes of silken threads in a bulbous expansion of the tube. This family is represented by single genus with 11 species from India.

Genus *Dipseudopsis*

<i>Dipseudopsis bicolorata</i> Martynov 1935	Maharashtra
<i>Dipseudopsis bombayana</i> Martynov 1935	Maharashtra
<i>Dipseudopsis buddha</i> Banks 1913	Bihar
<i>Dipseudopsis doehleri</i> Ulmer 1929	Meghalaya

<i>Dipseudopsis indica</i> McLachlan 1875	[India] [India] (Maxwell-Lefroy 1909) Orissa, {Bengal} (Martynov 1935)
<i>Dipseudopsis lamellata</i> Martynov 1935	{Assam}
<i>Dipseudopsis modesta</i> Banks 1911	Bihar
<i>Dipseudopsis onychophora</i> Navas 1935	Maharashtra
<i>Dipseudopsis pallida</i> Martynov 1935	Bihar
<i>Dipseudopsis recta</i> Martynov 1935	Bihar
<i>Dipseudopsis triclavata</i> Martynov 1935	Maharashtra, {Assam}

Family POLYCENTROPODIDAE

Some larvae construct fixed tubular shelters of silk of cover depressions in rocks with a silken roof, and are largely predacious. The habitat is running or standing waters. This family is represented by three genera with 9 species from India.

Genus *Hyalopsyche*

<i>Hyalopsyche parsula</i> Martynov 1935	{Assam}
<i>Hyalopsyche similis</i> Martynov 1935	Bihar, Maharashtra

Genus *Nyctiophlax*

<i>Nyctiophlax abruptus</i> (Bank 1913)	{Bengal}
---	----------

Genus *Plectrocnemia*

<i>Plectrocnemia aurea</i> Ulmer 1905	Sikkim {West Bengal} (Ulmer 1907, Martynov 1935)
<i>Plectrocnemia banksi</i> Fischer 1962	Sikkim (Banks 1920)
<i>Plectrocnemia distincta</i> Martynov 1935	[India]
<i>Plectrocnemia navasi</i> Ulmer 1906	[India] Sikkim (Maxwell-Lefroy 1909)
<i>Plectrocnemia obliquofasciata</i> Martynov 1935	{Punjab}
<i>Plectrocnemia punjabica</i> Martynov 1935	{Punjab}

Family HYDROPSYCHIDAE

Larvae construct fixed shelters of plant and rock fragments on rocks or logs, usually in rivers and streams, but occasionally along wave-washed shorelines of lakes. Larvae feed on algae, organic particles, and invertebrates filtered from the water current by a silken net, constructed at the entrance to the shelter. This family is represented by fifteen genera with 60 species from India.

Genus *Aethaloptera*

<i>Aethaloptera sexpunctata</i> (Kolenati 1859)	[East India] {S. Bengal} (Betten 1909) Bihar (Martynov 1935)
---	--

Genus *Amphipsyche*

<i>Amphipsyche apicalis</i> Banks 1939	[India]
<i>Amphipsyche bengalensis</i> Martynov 1935	{Bengal}
<i>Amphipsyche distincta</i> Martynov 1935	[C. India] Karnataka (Banks 1939).
<i>Amphipsyche indica</i> Martynov 1935	Bihar, {Bengal} (also Hafiz 1937) [S. India] (Seshadri 1955)
<i>Amphipsyche nirvana</i> Banks 1913	Bihar
<i>Amphipsyche proluta</i> McLachlan 1935	Mahrashtra (Navas 1934)
<i>Amphipsyche sigmosa</i> Navas 1935	Maharashtra
<i>Amphipsyche tricalcarata</i> Martynov 1935	Orissa
<i>Amphipsyche vedana</i> Banks 1913	Bihar

Genus *Amphipsychella*

<i>Amphipsychella extrema</i> Martynov 1935	{Bengal}
---	----------

Genus *Arctopsyche*

<i>Arctopsyche arcuata</i> Schmid 1968	Arunachal Pradesh
<i>Arctopsyche bicornis</i> Schmid 1968	Arunachal Pradesh
<i>Arctopsyche composita</i> Martynov 1930	Sikkim, Arunachal Pradesh, Uttar Pradesh, Sikkim (Schmid 1968)
<i>Arctopsyche fissa</i> Schmid 1968	Sikkim
<i>Arctopsyche inaequispinosa</i> Schmid 1968	Sikkim

<i>Arctopsyche integra</i> Schmid 1968	Arunachal Pradesh, Sikkim
<i>Arctopsyche lobata</i> Martynov 1930	{Punjab}, {Bengal}, (Martynov 1935) Uttar Pradesh, Sikkim, Manipur, Arunachal Pradesh (Schmid 1968)
<i>Arctopsyche pluviosa</i> Navas 1916	{West Bengal}
<i>Arctopsyche tricornis</i> Schmid 1968	Meghalaya

Genus *Cheumatopsyche*

<i>Cheumatopsyche chlorogastra</i> Navas 1932	Maharashtra
<i>Cheumatopsyche columnata</i> Martynov 1935	[C. India]
<i>Cheumatopsyche curvata</i> Martynov 1935	[C. India]
<i>Cheumatopsyche lebasi</i> Navas 1932	{West Bengal} {Bengal} (Martynov 1935)
<i>Cheumatopsyche processuata</i> Martynov 1927	Bihar (Martynov 1935)
<i>Cheumatopsyche stenocyta</i> Navas 1932	Maharashtra
<i>Cheumatopsyche suffusa</i> Navas 1932	Maharashtra
<i>Cheumatopsyche truncata</i> Martynov 1935	[C. India], {Assam} Uttar Pradesh

Genus *Diplectrona*

<i>Diplectrona brunnea</i> Betten 1909	{Assam}
<i>Diplectrona indica</i> Mosely 1931	Maharashtra
<i>Diplectrona marginata</i> Betten 1909	{West Bengal} {Bengal}, {Punjab}
<i>Diplectrona orientalis</i> Betten 1909	{West Bengal}
<i>Diplectrona salai</i> Navas 1932	Maharashtra
<i>Diplectrona ulmeri</i> Martynov 1935	Bihar

Genus *Hydatopsyche*

<i>Hydatopsyche spatulata</i> Maharashtra 1931	Maharashtra
--	-------------

Genus *Hydromanicus*

<i>Hydromanicus truncatus</i> Betten 1909	{Bengal}
---	----------

Genus *Hydropsyche*

<i>Hydropsyche asiatica</i> Ulmer 1905	Sikkim { West Bengal } (Betten 1909)
<i>Hydropsyche indica</i> Betten 1909	{ West Bengal }
<i>Hydropsyche lobulata</i> Martynov 1936	{ Bengal }
<i>Hydropsyche luctuosus</i> Ulmer 1905	Sikkim
<i>Hydropsyche pallidipennis</i> Martynov 1936	Uttar Pradesh
<i>Hydropsyche sagittata</i> Martynov 1936	Bihar

Genus *Hydropsychodes*

<i>Hydropsychodes indica</i> Navas 1932	(Maharashtra)
---	---------------

Genus *Macrostemum*

<i>Macrostemum ethelda</i> (Banks 1939)	Karnataka
<i>Macrostemum fastosum</i> (Walker 1852)	Sikkim (Ulmer 1906) { Assam } (Ulmer 1907) { West Bengal } (Betten 1909) { West Bengal } { Assam } Martynov 1935
<i>forma bifasciatum</i> Martynov 1935	{ Bengal }
<i>forma fuscum</i> Martynov 1935	{ Bengal }
<i>Macrostemum fulvescens</i> (Martynov 1935)	Kerala
<i>Macrostemum indistinctum</i> (Banks 1911)	{ Bengal }
<i>Macrostemum pallidipennis</i> (Martynov 1935)	Bihar
<i>Macrostemum pseudoneura</i> (Brauer 1865)	Karnataka (Martynov 1935)
<i>Macrostemum quinquefasciatum</i> (Mart. 1935)	Uttar Pradesh

Genus *Oestropsyche*

<i>Oestropsyche hageni</i> Banks 1939	[India]
<i>Oestropsyche vitrina</i> (Hagen 1859)	Bihar (Martynov 1935)

Genus *Parapsyche*

<i>Parapsyche kchina</i> Schmid 1968	Arunachal Pradesh
<i>Parapsyche mahati</i> Schmid 1968	Sikkim
<i>Parapsyche tchandratkuda</i> Schmid 1968	Manipur
<i>Parapsyche variyasi</i> Schmid 1968	Arunachal Pradesh

Genus *Polymorphanisus*

<i>Polymorphanisus flavipes</i> Banks 1939	[India]
<i>Polymorphanisus indicus</i> Banks 1911	{ Bengal }

<i>Polymorphanisus nigrcornis</i> Walker 1852	[North India] { Assam } (Betten 1909) Tamil Nadu (Martynov 1935)
<i>Polymorphanisus ocellaris</i> Ulmer 1906	Orissa (Martynov 1935)
<i>Polymorphanisus tumidus</i> Banks 1939	[India]

Genus *Trichomacronema*

<i>Trichomacronema shanorum</i> Schmid 1964	Manipur Uttar Pradesh, (Martynov 1935)
---	---

Family ECNOMIDAE

Larvae construct fixed meandering tubes of silk, covered with sand or detrital particles, within which they feed on periphyton and fine organic particles from the substrate. The habitats are lakes, ponds, and slow running waters. This family is represented by single genus with 7 species from India.

Genus *Ecnomus*

<i>Ecnomus costalis</i> Martynov 1935	[Central India]
<i>Ecnomus fletcheri</i> Mosely 1932	Tamil Nadu
<i>Ecnomus indicus</i> Martynov 1935	Bihar
<i>Ecnomus montanus</i> Mosely 1932	Jammu & Kashmir, Uttar Pradesh [C. India] (Martynov 1935)
<i>Ecnomus moselyi</i> Martynov 1935	Bihar
<i>Ecnomus pusanus</i> Mosely 1932	Bihar Maharashtra (Martynov 1935)
<i>Ecnomus tenellus</i> Ramb 1842	[India] (Martynov 1935) Maharashtra (Mosely 1932)

Suborder : INTEGRIPALPIA

Family : PHRYGANOPSYCHIDAE

The larval case consists mainly of small pieces of plant debris; very irregular, loosely held together, and flexible. The habitat is marginal pools of streams and springs. This family is represented by single genus with 3 species from India.

Genus *Phryganopsyche*

<i>Phryganopsyche latipennis elongata</i> (Kimmins 1950)	Meghalaya
<i>Phryganopsyche latipennis sikkimensis</i> (Kimmins 1950)	West Bengal
<i>Phryganopsyche latipennis</i> (Banks 1906)	Sikkim, Manipur Arunachal Pradesh (Schmid 1968)

(According to Schmid 1968, a very variable species with no subspecies)

Family : PHRYGANEIDAE

The larval case usually consists of leaf or bark pieces, fashioned into a continuous spiral coil or discrete cylindrical sections, joined end to end or arranged irregularly. Pupae in some genera are unusual among Trichoptera in lacking mandibles (adecticous). The habitat is mainly lakes and marshes; some species live in slower parts of streams, a few in temporary pools. This family is represented by three genera with 9 species from India.

Genus *Eubasilissa*

<i>Eubasilissa alaknanda</i> Schmid 1962	Uttar Pradesh
<i>Eubasilissa asiatica</i> (Betten 1909)	{ Assam } (Sibsagar)
(According to Schmid 1962 Sibsagar improbable : probably Srinagar (Kashmir))	
<i>Eubasilissa avalokhita</i> Schmid 1962	Arunachal Pradesh
subsp. <i>naga</i> Schmid 1962	Manipur
<i>Eubasilissa macLachlani</i> White 1862	[India] { Assam }, [W. & E. Himalaya] (Betten 1909) { West Bengal } (Martynov 1930) { Punjab } or Uttar Pradesh (Martynov 1936) Uttar Pradesh, Arunachal Pradesh, Sikkim (Schmid 1962)
<i>Eubasilissa chomolhari</i> Schmid 1962	Arunachal Pradesh
<i>Eubasilissa regina</i> McLachlan 1871	[India] (Ulmer 1907) Uttar Pradesh or { Punjab } (Martynov 1930)
<i>Eubasilissa tibetana</i> Martynov 1930	Sikkim (Schmid 1962)

Genus *Neurocyta*

<i>Neurocyta arenata</i> Navas 1916	{ West Bengal }, (Sikkim)
-------------------------------------	---------------------------

Genus *Oopterygia*

Oopterygia asiatica Betten 1909 {Assam}

Family LEPIDOSTOMATIDAE

Larval cases consist of plant or mineral materials variously arranged, frequently of quadrate pieces of leaves or bark forming a four-sided case. The habitat is mainly cool running waters where current is slow; some species are found in the littoral zone of lakes. The larvae feed mainly on plant detritus. This family is represented by sixteen genera with 29 species from India.

Genus *Adinarthrella*

Adinarthrella brunnea Mosely 1941 {Assam}

Adinarthrella kimsa Mosely 1941 Sikkim

Genus *Adinarthrum*

Adinarthrum kurseum Mosely 1949 Sikkim, {Assam}

Adinarthrum moulmina Mosely 1949 Assam

Genus *Agoerodes*

Agoerodes sida Mosely 1949 Sikkim

Genus *Anacrunoecia*

Anacrunoecia assamensis Mosely 1949 {Assam}

Genus *Dinarthrella*

Dinarthrella betteni Martynov 1936 [E. Himalaya]
{West Bengal} (Betten 1909) (sp.)
{West Bengal} (Mosely 1949)

Genus *Dinarthrum*

Dinarthrum ferox McLachlan 1871 [N. India]
[N. India] (Mosely 1939)

Dinarthrum margulum Mosely 1949 Jammu & Kashmir

Dinarthrum naganum Mosely 1939 Jammu & Kashmir

Dinarthrum rema Mosely 1939 {Punjab}

Dinarthrum sonomax Mosely 1939 Jammu & Kashmir

Dinarthrum destructa (Ulmer 1906) {West Bengal}
{West Bengal} (Kimmins 1952)

Genus *Goerodella*

Goerodella tesarum Mosely 1949 Uttar Pradesh

Genus *Goerodes*

Goerodes fuscatus (Navas 1932) Maharashtra
[S. India] (Martynov 1936)

Goerodes inaequalis (Martynov 1936) [W. Himalayas]

Goerodes khasianus Mosely 1949 Meghalaya

Goerodes palnius Mosely 1949 Tamil Nadu

Genus *Goerodella*

Goerodina dubitans Mosely 1949 Meghalaya

Goerodina serrata Mosely 1949 Meghalaya

Genus *Hypodinarthrum*

Hypodinarthrum parvulum McLachlan 1875 Jammu & Kashmir (Mosely 1939)

Genus *Indodinarthrum*

Indodinarthrum latum Martynov 1936 { West Bengal }, { Punjab }

Indodinarthrum punjabicum Martynov 1936 { Punjab }

Genus *Kodala*

Kodala lanca Mosely 1949 Tamil Nadu

Genus *Metadinarthrum*

Metadinarthrum parvulum McLachlan 1878 Jammu & Kashmir
(also Mosely 1939)

Genus *Paraphlegopteryx*

Paraphlegopteryx composita Mart. 1936 [E. Himalaya]
Uttar Pradesh (Mosely 1949)

Paraphlegopteryx normalis Mosely 1949 West Bengal

Genus *Indocrunoecia*

Indocrunoecia heterolepidia Mart. 1936 West Bengal

Genus *Ulmerodes*

Ulmerodes armatus (Ulmer 1905) { Assam }

Family BRACHYCENTRIDAE

The larval case usually consists of plant materials; it is often four sided, of sand in some genera or largely of silk alone. The habitat is running water; some genera are characteristic of small, cool streams, others of large rivers. This family is represented by two genera with 12 species from India.

Genus *Brachycentrus*

<i>Brachycentrus kozlovi</i> Martynov 1909	Kashmir & Ladakh (Mosely 1938) Sikkim & Uttar Pradesh (Schmid 1961)
--	--

Genus *Micrasema*

<i>Micrasema abghavyani</i> Schmid 1992	Sikkim
<i>Micrasema adhacharam</i> Schmid 1992	Assam, Manipur
<i>Micrasema adhiram</i> Schmid 1992	Sikkim
<i>Micrasema aparatitam</i> Schmid 1992	Assam
<i>Micrasema arsajjanam</i> Schmid 1992	Assam
<i>Micrasema avadhiritam</i> Schmid 1992	Assam, Meghalaya
<i>Micrasema dabhram</i> Schmid 1992	Uttar Pradesh
<i>Micrasema jihmam</i> Schmid 1992	Sikkim
<i>Micrasema karunam</i> Schmid 1992	Assam, Manipur
<i>Micrasema kripanam</i> Schmid 1992	Assam
<i>Micrasema punjaubi</i> Mosely 1938	{Punjab}

Family : UENOIDAE

The larval case of fine sand or silk alone is very slender. The habitat is rapid streams. Larvae are found mainly on rocks; they are gregarious, and scrap algae and fine organic particles. This family is represented by single genus with 6 species from India.

Genus *Uenoa*

<i>Uenoa arcuata</i> Wiggins, Weaver & Unzicker 1985	Arunachal Pradesh
<i>Uenoa fernadoschmidi</i> Botosaneanu 1979	Uttar Pradesh
<i>Uenoa hiberna</i> Kimmins 1964	Uttar Pradesh, Sikkim, West Bengal, Meghalaya, Manipur, Arunachal Pradesh (Wiggins et al. 1985)
<i>Uenoa hindustana</i> (Martynov 1936)	{Punjab}
<i>Uenoa laga</i> Mosely 1939	Jammu & Kashmir
<i>Uenoa punja</i> Mosely 1939	{Punjab}

Family : LIMNEPHILIDAE

The larval case consists of plant or mineral materials, frequently combined, and arranged in many different ways. The habitat is running and standing water, including temporary pools, sometimes even brackish water. This family is represented by 12 genera with 59 species from India.

Genus *Apatania*

<i>Apatania avyddhagada</i> Schmid 1968	Uttar Pradesh
<i>Apatania bhimagada</i> Schmid 1968	Arunachal Pradesh
<i>Apatania brevis</i> Mosely 1936	Jammu & Kashmir
<i>Apatania devisaraspali</i> Schmid 1968	Uttar Pradesh, (Schmid 1968)
<i>Apatania dirghabahu</i> Schmid 1968	Sikkim
<i>Apatania extenta</i> Kimmins 1950	Arunachal Pradesh

Genus *Apataniana*

<i>Apataniana charadija</i> Schmid 1968	Uttar Pradesh
---	---------------

Genus *Apatelina*

<i>Apatelina incerta</i> Martynov 1936	[India]
(Probably <i>Moropsyche</i> according to Schmid 1968)	

Genus *Aplatyphlax*

<i>Aplatyphlax cristatus</i> Kimmins 1950	Arunachal Pradesh
<i>Aplatyphlax erectus</i> Kimmins 1950	Arunachal Pradesh
<i>Aplatyphlax steeleae</i> Kimmins 1950	Arunachal Pradesh
<i>Aplatyphlax eupalinos</i> Schmid 1991	Sikkim
<i>Aplatyphlax mishmicus</i> Kimmins 1950	Arunachal Pradesh
<i>Aplatyphlax terrestris</i> Schmid 1991	Assam

Genus *Astenophylina*

<i>Astenophylina kashmira</i> Mosely 1936	Jammu & Kashmir
---	-----------------

Genus *Astratodina*

<i>Astratodina antenor</i> Schmid 1991	Sikkim
<i>Astratodina anteros</i> Schmid 1991	Uttar Pradesh, Sikkim

Genus *Asynarchus*

<i>Asynarchus tibetanus</i> Schmid 1966	Sikkim
---	--------

Genus *Limnephilus*

<i>Limnephilus fuscovittatus</i> Schmid 1966	Sikkim
<i>Limnephilus tibeticus</i> Schmid 1966	Uttar Pradesh

Genus *Moropsyche*

<i>Moropsyche avikritanga</i> Schmid 1968	Manipur
<i>Moropsyche chandrabuchita</i> Schmid 1968	Meghalaya, Manipur
<i>Moropsyche dirghakarni</i> Schmid 1968	Meghalaya
<i>Moropsyche gairichringiya</i> Schmid 1968	Manipur
<i>Moropsyche girautcharichnu</i> Schmid 1968	Arunachal Pradesh
<i>Moropsyche girikchit</i> Schmid 1968	Manipur
<i>Moropsyche krichnaruna</i> Schmid 1968	Sikkim, Arunachal Pradesh
<i>Moropsyche trikonakarni</i> Schmid 1968	Sikkim
<i>Moropsyche urdhvakarni</i> Schmid 1968	Manipur
<i>Moropsyche vanegudha</i> Schmid 1968	Arunachal Pradesh

Genus *Notania*

<i>Notania adhanya</i> Schmid 1968	Sikkim
<i>Notania brunnea</i> Mosely 1950	Arunachal Pradesh
<i>Notania itarichta</i> Schmid 1968	Sikkim
<i>Notania kricha</i> Schmid 1968	Arunachal Pradesh

Genus *Phylostenax*

<i>Phylostenax himalus</i> Mosely 1935	Uttar Pradesh, West Bengal
--	----------------------------

Genus *Pseudostenophylax*

<i>Pseudostenophylax acutifalcatus</i> Schmid 1991	Assam Manipur
<i>Pseudostenophylax amphion</i> Schmid 1991	Uttar Pradesh
<i>Pseudostenophylax angulatus</i> Schmid 1991	Uttar Pradesh
<i>Pseudostenophylax angustifalctus</i> Schmid 1991	Assam
<i>Pseudostenophylax arwiel</i> Schmid 1991	Uttar Pradesh
<i>Pseudostenophylax bifalcatus</i> Schmid 1991	Assam
<i>Pseudostenophylax fimbriatofalcatus</i> Schmid 1991	Sikkim
<i>Pseudostenophylax garhwalensis</i> Schmid 1991	Uttar Pradesh
<i>Pseudostenophylax glycerion</i> Schmid 1991	Sikkim

<i>Pseudostenophylax griseolus</i> Martynov 1930	Sikkim, (Mosely 1936)
<i>Pseudostenophylax himalayanus</i> Martynov 1930	Sikkim
<i>Pseudostenophylax indicus</i> Navas 1917	{ West Bengal }
<i>Pseudostenophylax ithuriel</i> Schmid 1991	Uttar Pradesh
<i>Pseudostenophylax kashmirensis</i> (Mosely 1936)	Jammu & Kashmir
<i>Pseudostenophylax latifalcatus</i> Schmid 1991	Assam
<i>Pseudostenophylax micraulax</i> (Mart. 1928)	Jammu & Kashmir
<i>Pseudostenophylax mitchelli</i> (Mosely 1936)	Jammu & Kashmir
<i>Pseudostenophylax nectarion</i> Schmid 1991	Assam, Manipur
<i>Pseudostenophylax ovalis</i> Schmid 1991	Uttar Pradesh
<i>Pseudostenophylax pauper</i> Schmid 1991	Sikkim
<i>Pseudostenophylax schelpei</i> (Kimm. 1854)	{ Punjab }
<i>Pseudostenophylax secretus</i> Mart. 1927	{ Punjab }
	Sikkim (Mosely 1936)
<i>Pseudostenophylax squamolineatus</i> Schmid 1991	Assam, Manipur
<i>Pseudostenophylax tenuifalcatus</i> Schmid 1991	Sikkim

Family : GOERIDAE

The larval case consists of rock fragments, and is curved. The habitat is running water; a few species are confined to water-saturated organic ooze around spring seepage. This family is represented by two genera with 30 species from India.

Genus *Goera*

<i>Goera arisudana</i> Schmid 1991	Assam
<i>Goera dandaka</i> Schmid 1991	Uttar Pradesh
<i>Goera dilipa</i> Schmid 1991	Assam
<i>Goera janaka</i> Schmid 1991	Assam, Manipur
<i>Goera kalimpa</i> Mosely 1938	{ West Bengal }
<i>Goera kausalya</i> Schmid 1991	Sikkim
<i>Goera kursea</i> Mosely 1938	{ West Bengal }
<i>Goera maithili</i> Schmid 1991	Assam
<i>Goera mandna</i> Mosely 1938	Uttar Pradesh, Sikkim, Assam
<i>Goera mishmia</i> Mosely 1938	Arunachal Pradesh
<i>Goera nigricornis</i> Navas 1932	Maharashtra

<i>Goera poarabhava</i> Schmid 1991	Assam, Manipur
<i>Goera paracrita</i> Schmid 1991	Uttar Pradesh
<i>Goera parakiya</i> Schmid 1991	Kerala
<i>Goera paramahanas</i> Schmid 1991	Assam
<i>Goera paramika</i> Schmid 1991	Assam
<i>Goera parayatta</i> Schmid 1991	Assam
<i>Goera paropadecha</i> Schmid 1991	Madras
<i>Goera raghu</i> Schmid 1991	Sikkim
<i>Goera rakchasa</i> Schmid 1991	Assam, Manipur
<i>Goera relictata</i> Betten 1909	[India]
<i>Goera sarayu</i> Schmid 1991	Uttar Pradesh
<i>Goera tridens</i> Mosely 1938	[India]
<i>Goera vaichravana</i> Schmid 1991	Uttar Pradesh
<i>Goera vaidhi</i> Schmid 1991	Assam, Manipur
<i>Goera vajnadatta</i> Schmid 1991	Assam
<i>Goera valmiki</i> Schmid 1991	Assam
<i>Goera vinata</i> Schmid 1991	Assam, Manipur

Genus *Larcasia*

<i>Larcasia assamica</i> Schmid 1965	Manipur
<i>Larcasia elia</i> Mosely 1939	Jammu & Kashmir

Family : MOLANNIDAE

The larval case consists mainly of sand, occasionally with organic materials, and is straight and cylindrical but with the lateral margins extended as a flange continuous anteriorly as a dorsal hood over the anterior opening. The habitat is sandy deposits in waters of either little or no current. This family is represented by two genera with 8 species from India.

Genus *Indomolannodes*

<i>Indomolannodes comans</i> Wiggins 1968	Meghalaya
<i>Indomolannodes decurvatus</i> Wiggins 1968	Manipur
<i>Indomolannodes excavatus</i> Wiggins 1968	Manipur
<i>Indomolannodes falcifer</i> Wiggins 1968	Meghalaya, Manipur
<i>Indomolannodes incurvatus</i> Wiggins 1968	Arunachal Pradesh, Uttar Pradesh

Genus *Molanna*

<i>Molanna crinita</i> Wiggins 1968	Arunachal Pradesh
<i>Molanna paramoesta</i> Wiggins 1968	Madhya Pradesh, Manipur, Meghalaya, Kerala, Tamil Nadu, Karnataka
<i>Molanna saetigera</i> Wiggins 1968	Meghalaya

Family : LEPTOCERIDAE

The larval case consists of rock or plant material, arranged in diverse ways; sometimes they consist entirely of silk. The habitat is mainly standing waters, in rivers mainly in areas of reduced current. This family is represented by thirteen genera with 248 species from India.

Genus *Adicella*

<i>Adicella acte</i> Schmid 1994	Uttar Pradesh
<i>Adicella aglae</i> Schmid 1994	Madras
<i>Adicella athys</i> Schmid 1994	Assam, Meghalaya
<i>Adicella athys</i> Schmid 1994	Assam
<i>Adicella bifasciata</i> Kimmins 1963	Tamil Nadu
<i>Adicella biramosa</i> Martynov 1936	{ Assam }
<i>Adicella castanea</i> Kimmins 1963	Meghalaya
<i>Adicella chloe</i> Schmid 1994	Assam
<i>Adicella clelia</i> Schmid 1994	Madras
<i>Adicella clio</i> Schmid 1994	Mysore
<i>Adicella clotho</i> Schmid 1994	Madras
<i>Adicella core</i> Schmid 1994	Assam
<i>Adicella danae</i> Schmid 1994	Madras
<i>Adicella daphne</i> Schmid 1994	Assam
<i>Adicella dhruvasena</i> Schmid 1961	Uttar Pradesh, Madhya Pradesh
<i>Adicella dicte</i> Schmid 1994	Assam, Meghalaya
<i>Adicella dirce</i> Schmid 1994	Sikkim
<i>Adicella dryas</i> Schmid 1994	Assam
<i>Adicella dryope</i> Schmid 1994	Assam, Manipur
<i>Adicella eloa</i> Schmid 1994	Sikkim
<i>Adicella enone</i> Schmid 1994	Sikkim

<i>Adicella erato</i> Schmid 1994	Assam, Manipur
<i>Adicella eryale</i> Schmid 1994	Assam, Meghalaya
<i>Adicella erynome</i> Schmid 1994	Assam, Meghalaya
<i>Adicella eryx</i> Schmid 1994	Assam
<i>Adicella eunoia</i> Schmid 1994	Assam
<i>Adicella euphrosyne</i> Schmid 1994	Sikkim
<i>Adicella eurynoe</i> Schmid 1994	Assam; Manipur
<i>Adicella eurypyle</i> Schmid 1994	Assam, Manipur
<i>Adicella eurythemiste</i> Schmid 1994	Assam, Manipur
<i>Adicella eurythene</i> Schmid 1994	Assam
<i>Adicella evadne</i> Schmid 1994	Assam, Meghalaya
<i>Adicella evohe</i> Schmid 1994	Sikkim
<i>Adicella fulva</i> Kimmins 1963	Meghalaya
<i>Adicella hebe</i> Schmid 1994	Assam
<i>Adicella lais</i> Schmid 1994	Assam
<i>Adicella lampito</i> Schmid 1994	Assam
<i>Adicella leda</i> Schmid 1994	Assam, Meghalaya
<i>Adicella leto</i> Schmid 1994	Assam
<i>Adicella maculata</i> Kimmins 1963	Meghalaya
<i>Adicella myrtho</i> Schmid 1994	Sikkim
<i>Adicella niobe</i> Schmid 1994	Uttar Pradesh
<i>Adicella nyse</i> Schmid 1994	Sikkim
<i>Adicella phoebe</i> Schmid 1994	Assam
<i>Adicella phryne</i> Schmid 1994	Assam, Meghalaya
<i>Adicella thais</i> Schmid 1994	Assam
<i>Adicella thalie</i> Schmid 1994	Assam

Genus *Ceraclea*

<i>Ceraclea distinguenda</i> (Martynov 1936)	Madhya Pradesh
<i>Ceraclea marginata</i> (Banks 1911)	Bihar
<i>Ceraclea martynovi</i> (Forsslund 1940)	Madhya Pradesh

Genus *Leptocerus*

<i>Leptocerus agunachila</i> Schmid 1987	Arunachal Pradesh
<i>Leptocerus akhunata</i> Schmid 1987	Arunachal Pradesh

<i>Leptocerus ankuchagraha</i> Schmid 1987	Arunachal Pradesh
<i>Leptocerus aprachasta</i> Schmid 1987	Manipur
<i>Leptocerus atidvaya</i> Schmid 1987	Arunachal Pradesh
<i>Leptocerus atiraskrita</i> Schmid 1987	Karnataka
<i>Leptocerus atyudatta</i> Schmid 1987	Manipur
<i>Leptocerus bahuchaka</i> Schmid 1987	Meghalaya, Manipur
<i>Leptocerus bosei</i> Kimmins 1963	Madhya Pradesh
<i>Leptocerus chaktika</i> Schmid 1987	Meghalaya
<i>Leptocerus chatadalaja</i> Schmid 1987	Karnataka, Maharashtra
<i>Leptocerus cherrensis</i> Kimmins 1963	Meghalaya (also Schmid 1987)
<i>Leptocerus chyamavadata</i> Schmid 1987	Meghalaya
<i>Leptocerus datrayukta</i> Schmid 1987	Meghalaya
<i>Leptocerus kchapavarna</i> Schmid 1987	Karnataka
<i>Leptocerus mahadbhuta</i> Schmid 1987	Mizoram
<i>Leptocerus mahasena</i> (Schmid 1958)	Karnataka, Madhya Pradesh (Schmid 1987)
<i>Leptocerus mahawansa</i> (Schmid 1958)	Kerala, Karnataka (Schmid 1987)
<i>Leptocerus manichyana</i> Schmid 1987	Manipur
<i>Leptocerus mechakita</i> Schmid 1987	Meghalaya
<i>Leptocerus mechavrichana</i> Schmid 1987	Kerala
<i>Leptocerus posticus</i> (Banks 1911)	Maharashtra, {Bengal} Orissa (as <i>Setodes inlensis</i> Mart.) Kerala, Andhra Pradesh, Tamil Nadu, Karnataka (Schmid 1987)
<i>Leptocerus prithudhara</i> Schmid 1987	Meghalaya
<i>Leptocerus sadbhuta</i> Schmid 1987	Meghalaya, Manipur
<i>Leptocerus sakantaka</i> Schmid 1987	Karnataka
<i>Leptocerus samchita</i> Schmid 1987	Kerala, Karnataka, Tamil Nadu
<i>Leptocerus samnata</i> Schmid 1987	Meghalaya
<i>Leptocerus sarchtika</i> Schmid 1987	Manipur
<i>Leptocerus sudhara</i> Schmid 1987	Kerala, Karnataka
<i>Leptocerus sukhabddha</i> Schmid 1987	Kerala, Karnataka
<i>Leptocerus ukchatara</i> Schmid 1987	Uttar Pradesh
<i>Leptocerus vakrita</i> Schmid 1987	Manipur

<i>Poecilopsyche nasatya</i> Schmid 1968	Arunachal Pradesh
<i>Poecilopsyche pandava</i> Schmid 1968	Sikkim
<i>Poecilopsyche pandu</i> Schmid 1968	Arunachal Pradesh
<i>Poecilopsyche sahadeva</i> Schmid 1968	Arunachal Pradesh
<i>Poecilopsyche suyodhana</i> Schmid 1968	Sikkim
<i>Poecilopsyche vayu</i> Schmid 1968	Arunachal Pradesh
<i>Poecilopsyche vidura</i> Schmid 1968	Arunachal Pradesh
<i>Poecilopsyche yudhishthira</i> Schmid 1968	Arunachal Pradesh

Genus *Setodellina*

<i>Setodellina angustipennis</i> Martynov 1936	Karnataka
<i>Setodellina mahadeva</i> (Banks. 1913)	Karnataka
<i>Setodellina tenuis</i> Martynov 1936	Madhya Pradesh

Genus *Setodes*

<i>Setodes abhichobhita</i> Schmid 1987	Uttar Pradesh
<i>Setodes abhiramika</i> Schmid 1987	Karnataka
<i>Setodes abhirupa</i> Schmid 1987	Uttar Pradesh
<i>Setodes abhrayita</i> Schmid 1987	Karnataka
<i>Setodes acchidra</i> Schmid 1987	Karnataka, Tamil Nadu
<i>Setodes adusita</i> Schmid 1987	Meghalaya
<i>Setodes agarhita</i> Schmid 1987	Manipur
<i>Setodes akalanka</i> Schmid 1987	Arunachal Pradesh, Sikkim
<i>Setodes akilbicha</i> Schmid 1987	Tamil Nadu
<i>Setodes akunchita</i> Schmid 1987	Tamil Nadu, Kerala
<i>Setodes akutila</i> Schmid 1987	Karnataka
<i>Setodes akutsita</i> Schmid 1987	Mizoram
<i>Setodes alampata</i> Schmid 1987	Meghalaya
<i>Setodes alukcha</i> Schmid 1987	Uttar Pradesh
<i>Setodes antardhana</i> Schmid 1987	Arunachal Pradesh
<i>Setodes aparimeya</i> Schmid 1987	Arunachal Pradesh, Sikkim
<i>Setodes apinchanga</i> Schmid 1987	Meghalaya, Manipur
<i>Setodes apitayati</i> Schmid 1987	Arunachal Pradesh

<i>Setodes argentiferus</i> McLachlan 1871	[N. W. India] Bihar (Martynov 1936) Meghalaya, Manipur
<i>Setodes asadjarama</i> Schmid 1987	Tamil Nadu
<i>Setodes asammuaddha</i> Schmid 1987	Kerala, Karnataka
<i>Setodes atiguna</i> Schmid 1987	Meghalaya
<i>Setodes atiloma</i> Schmid 1987	Karnataka
<i>Setodes atipunya</i> Schmid 1987	Karnataka
<i>Setodes atisubhaga</i> Schmid 1987	Manipur
<i>Setodes atitejas</i> Schmid 1987	Mizoram
<i>Setodes atymanjula</i> Schmid 1987	Tamil Nadu
<i>Setodes atyutkata</i> Schmid 1987	Uttar Pradesh
<i>Setodes bhimachringa</i> Schmid 1987	Maharashtra, Kerala, Karnataka
<i>Setodes bimaculatus</i> Martynov 1936	Bihar
<i>Setodes chandrakita</i> Schmid 1987	Arunachal Pradesh
<i>Setodes chandravarana</i> Schmid 1987	Meghalaya, Manipur
<i>Setodes chubhamyu</i> Schmid 1987	Tamil Nadu, Kerala
<i>Setodes dantavarana</i> Schmid 1987	Maharashtra, Kerala Tamil Nadu, Karnataka
<i>Setodes dhanavridhha</i> Schmid 1987	Arunachal Pradesh, Uttar Pradesh Sikkim
<i>Setodes dhanika</i> Schmid 1987	Uttar Pradesh
<i>Setodes divyarupa</i> Schmid 1987	Arunachal Pradesh
<i>Setodes ekachringa</i> Schmid 1987	Karnataka
<i>Setodes ekapita</i> Schmid 1987	Kerala
<i>Setodes fluvialis</i> Kimmins 1963	Uttar Pradesh, Maharashtra, Kerala, Karnataka (Schmid 1987)
<i>Setodes furcatus</i> Navas 1932	Maharashtra
<i>Setodes gaurichachringa</i> Schmid 1987	Kerala
<i>Setodes gherni</i> Schmid 1987	Arunachal Pradesh
<i>Setodes gutika</i> Schmid 1987	Arunachal Pradesh
<i>Setodes gutivridhha</i> Schmid 1987	Manipur
<i>Setodes himaruna</i> Schmid 1987	Karnataka
<i>Setodes jatisampanna</i> Schmid 1987	Kerala

<i>Setodes kadrava</i> Schmid 1987	Meghalaya, Manipur, Mizoram, Uttar Pradesh
<i>Setodes kalyand</i> Schmid 1987	Karnataka
<i>Setodes kantyamrita</i> Schmid 1987	Meghalaya
<i>Setodes kapchajalaja</i> Schmid 1987	Kerala, Karnataka
<i>Setodes khechara</i> Schmid 1987	Manipur
<i>Setodes kumara</i> Schmid 1987	Mizoram
<i>Setodes lineatus</i> Banks 1913	Bihar, Meghalaya, Manipur, Madhya Pradesh, Karnataka (Schmid 1987)
<i>Setodes madhuvarna</i> Schmid 1987	Kerala, Karnataka, Tamil Nadu
<i>Setodes mahabichu</i> Schmid 1987	Meghalaya, Manipur, Mizoram
<i>Setodes manimekhala</i> Schmid 1987	Meghalaya, Manipur
<i>Setodes manivridha</i> Schmid 1987	Arunachal Pradesh
<i>Setodes mauktikavridha</i> Schmid 1987	Meghalaya
<i>Setodes meghavarna</i> Schmid 1987	Karnataka
<i>Setodes monicae</i> Schmid 1987	Karnataka
<i>Setodes nagarjouna nagarjouna</i> Schmid 1987	Uttar Pradesh (Schmid 1987)
subsp. <i>assamicus</i> Schmid 1987	Meghalaya
<i>Setodes navanita</i> Schmid 1987	Meghalaya
<i>Setodes nirmala</i> Schmid 1987	Manipur
<i>Setodes nyuna</i> Schmid 1987	Karnataka
<i>Setodes pandara</i> Schmid 1987	Uttar Pradesh
<i>Setodes paribhuchita</i> Schmid 1987	Meghalaya
<i>Setodes parichkrita</i> Schmid 1987	Manipur
<i>Setodes parilaghu</i> Schmid 1987	Manipur
<i>Setodes parisamchuddha</i> Schmid 1987	Maharashtra, Karnataka, Tamil Nadu
<i>Setodes prabhatajalaja</i> Schmid 1987	Tamil Nadu
<i>Setodes pratachandradynti</i> Schmid 1987	Tamil Nadu

<i>Setodes priyadarcha</i> Schmid 1987	Uttar Pradesh
<i>Setodes puchkaraja</i> Schmid 1987	Meghalaya
<i>Setodes puruchringa</i> Schmid 1987	Meghalaya
<i>Setodes sachrika</i> Schmid 1987	Mizoram, Manipur
<i>Setodes samphulla</i> Schmid 1987	Tamil Nadu
<i>Setodes samprabhinna</i> Schmid 1987	Tamil Nadu
<i>Setodes sarvapunya</i> Schmid 1987	Kerala
<i>Setodes satichaya</i> Schmid 1987	Uttar Pradesh
<i>Setodes savibhrama</i> Schmid 1987	Meghalaya, Manipur
<i>Setodes sternalis</i> Martynov	Madhya Pradesh
<i>Setodes subhachita</i> Schmid 1987	Kerala
<i>Setodes sucharu</i> Schmid 1987	Meghalaya
<i>Setodes supattra</i> Schmid 1987	Karnataka
<i>Setodes tchaturdanta</i> Schmid 1987	Sikkim
<i>Setodes tejasvin</i> Schmid 1987	Maharashtra, Madhya Pradesh
<i>Setodes tenuifalcatus</i> Martynov	Madhya Pradesh, Maharashtra, Bihar (Schmid 1987)
<i>Setodes tilakita</i> Schmid 1987	Uttar Pradesh
<i>Setodes tridanta</i> Schmid 1987	Meghalaya
<i>Setodes trikantayudha</i> Schmid 1987	Karnataka, Kerala
<i>Setodes uchita</i> Schmid 1987	Meghalaya
<i>Setodes uddharcha</i> Schmid 1987	Manipur
<i>Setodes udghona</i> Schmid 1987	Manipur
<i>Setodes unispinus</i> Martynov 1936	Bihar
<i>Setodes uttamavarna</i> Schmid 1987	Kerala, Tamil Nadu
<i>Setodes vichitrita</i> Schmid 1987	Tamil Nadu
<i>Setodes viridellus</i> Navas 1932	Maharashtra
<i>Setodes vitanka</i> Schmid 1987	Karnataka
<i>Setodes vratachakora</i> Schmid 1987	Kerala, Tamil Nadu, Karnataka
<i>Setodes yatharupa</i> Schmid 1987	Sikkim

Genus *Tagalopsyche*

<i>Tagalopsyche flectcheri</i> kimmins 1963	Tamil Nadu
---	------------

Genus *Triaenodes*

<i>Triaenodes eximius</i> Schmid, 1994	Mysore
<i>Triaenodes fastasio</i> Schmid, 1994	Uttar Pradesh

<i>Triaenodes fortunio</i> Schmid, 1994	Assam, Meghalaya
<i>Triaenodes gracillimus</i> (martynov 1935)	Meghalaya (Schmid 1968)
<i>Triaenodes indicus</i> Martynov 1936	[S. India]
<i>Triaenodes internus</i> McLachlan 1875	Jammu & Kashmir (Kimmins 1963)
<i>Triaenodes trivulcio</i> Schmid, 1994	Assam, Manipur

Genus *Trichosetodes*

<i>Trichosetodes angustipennis</i> (Mart, 1936)	Madhya Pradesh
<i>Trichosetodes atibhadrata</i> Schmid 1987	Manipur
<i>Trichosetodes atichayana</i> Schmid 1987	Meghalaya, Manipur
<i>Trichosetodes atidhanin</i> Schmid 1987	Uttar Pradesh, West Bengal, Sikkim
<i>Trichosetodes atiharin</i> Schmid 1987	Maharashtra
<i>Trichosetodes atiramaniya</i> Schmid 1987	Meghalaya
<i>Trichosetodes atirupa</i> Schmid 1987	Meghalaya
<i>Trichosetodes atisudhara</i> Schmid 1987	Meghalaya, Manipur Mizoram
<i>Trichosetodes atisukchma</i> Schmid 1987	Madhya Pradesh
<i>Trichosetodes atisukha</i> Schmid 1987	Meghalaya
<i>Trichosetodes compositus</i> Martynov 1936	Bihar Widespread In India (Schmid 1987)
<i>Trichosetodes damchtragada</i> Schmid 1987	Kerala, Karnataka
<i>Trichosetodes karapatradhara</i> Schmid 1987	Karnataka, Tamil Nadu, Maharashtra

Genus *Triplectides*

<i>Triplectides gilolensis</i> (Mc Lachlan 1866)	[India] (Betten 1909)
<i>Triplectides indicus</i> (Walker 1852)	{N. Bengal}
<i>Triplectides magnus</i> (Walker 1852)	{West Bengal}, (Ulmer 1906) {West Bengal}, Bihar, Orissa (Martynov 1936)
<i>Triplectides viviparus</i> (Wood-Manson 1890)	{West Bengal}

Family CALAMOCERATIDAE

The larval cases usually consist of leaf or bark pieces, or of twigs, hollowed out by larvae. The habitat is streams, where the current is reduced, coastal lakes, and swamps. This family is represented by two genera with 7 species from India.

Genus *Anisocentropus*

<i>Anisocentropus kempii</i> Sartynov 1936	Maharashtra
<i>Anisocentropus salsum</i> (Betten 1909)	{ Assam }
	West Bengal
	(Martynov 1936)

Genus *Ganonema*

<i>Ganonema brevipenne</i> Ulmer 1906	[India] (Banks 1931)
<i>Ganonema flexuosus</i> Martynov 1936	Maharashtra
<i>Ganonema fusicpenne</i> (Albarda 1881)	{ Assam } (Ulmer 1906)
	{ Punjab } or Uttar Pradesh
	(Betten 1909) [India]
	(several localities)
	(Martynov 1936)
<i>Ganonema longipenne</i> Martynov 1930	{ Assam }
<i>Ganonema simuatus</i> Martynov 1936	Orissa

Family LIMNOCENTROPODIDAE

The larval case consists mainly of rock fragments, with a few plant pieces, frequently also with silken denticles added, and is unusual in the long silken stalk fastening the anterior edge of the case to the substrate. The habitat is strong currents of rapid streams. This family is represented by single genus with 5 species from India.

Genus *Limnocentropus*

<i>Limnocentropus fletcheri</i> Mosely 1935	Sikkim
<i>Limnocentropus himalayanus</i> Martynov 1930	Sikkim
<i>Limnocentropus insolitus</i> Ulmer 1907	{ West Bengal } (Ulmer 1926)
	Sikkim (Martynov 1930)
<i>Limnocentropus mergatus</i> Kimmmins 1950	Sikkim
<i>Limnocentropus rectus</i> Mosely 1950	Meghalaya

Family ODONTOCERIDAE

The larval case consists of fine rock fragments. The habitat is running waters. Larvae usually burrow in loose sediments; they are omnivorous. This family is represented by single genus with 3 species from India.

Genus *Psilotreta*

<i>Psilotreta assamensis</i> Parker & Wiggins 1987	Sikkim, Arunachal Pradesh
<i>Psilotreta schmidi</i> Parker & Wiggins 1987	Sikkim
<i>Psilotreta</i> sp. larva	Arunachal Pradesh (in Parker & Wiggins 1987)

Family HELICOPSYCHIDAE

The larval cases consist of sand grains, fastened with silk to form a helix, resembling the shells of snails. The habitat is running water, ranging from cool to warm streams about 34°C where few other insects live, and the littoral zone of lakes. This family is represented by two genera with 29 species from India.

Genus *Cochliophylax*

<i>Cochliophylax antinoe</i> Schmid 1993	Assam
<i>Cochliophylax arsinoe</i> Schmid 1993	Assam, Manipur
<i>Cochliophylax astynome</i> Schmid 1993	Sikkim
<i>Cochliophylax chrysothoe</i> Schmid 1993	Assam
<i>Cochliophylax euryboe</i> Schmid 1993	Assam
<i>Cochliophylax harmothoe</i> Schmid 1993	Assam
<i>Cochliophylax hippothoe</i> Schmid 1993	Sikkim
<i>Cochliophylax itonoe</i> Schmid 1993	Assam, Manipur
<i>Cochliophylax laothoe</i> Schmid 1993	Assam
<i>Cochliophylax phoebe</i> Schmid 1993	Assam, Manipur
<i>Cochliophylax xenothoe</i> Schmid 1993	Uttar Pradesh

Genus *Helicopsyche*

<i>Helicopsyche calliope</i> Schmid 1993	Assam, Manipur
<i>Helicopsyche callirrhoe</i> Schmid 1993	Assam, Meghalaya
<i>Helicopsyche chionadoce</i> Schmid 1993	Madras
<i>Helicopsyche cymodoce</i> Schmid 1993	Assam
<i>Helicopsyche demodoce</i> Schmid 1993	Assam
<i>Helicopsyche erigone</i> Schmid 1993	Assam, Meghalaya
<i>Helicopsyche erynoe</i> Schmid 1993	Assam
<i>Helicopsyche erythronoe</i> Schmid 1993	Manipur
<i>Helicopsyche eurycrene</i> Schmid 1993	Madras

<i>Helicopsyche leucothoe</i> Schmid 1993	Manipur
<i>Helicopsyche maculata</i> Schmid 1993	Madras
<i>Helicopsyche martynovi</i> Mosely 1939	Tamil Nadu
<i>Helicopsyche myrrhine</i> Schmid 1993	Mysore
<i>Helicopsyche onodoce</i> Schmid 1993	Assam, Manipur
<i>Helicopsyche philodoce</i> Schmid 1993	Madras
<i>Helicopsyche thedoce</i> Schmid 1993	Assam
<i>Helicopsyche thyonoe</i> Schmid 1993	Assam
<i>Helicopsyche</i> sp. case	Sikkim McLachlan 1875

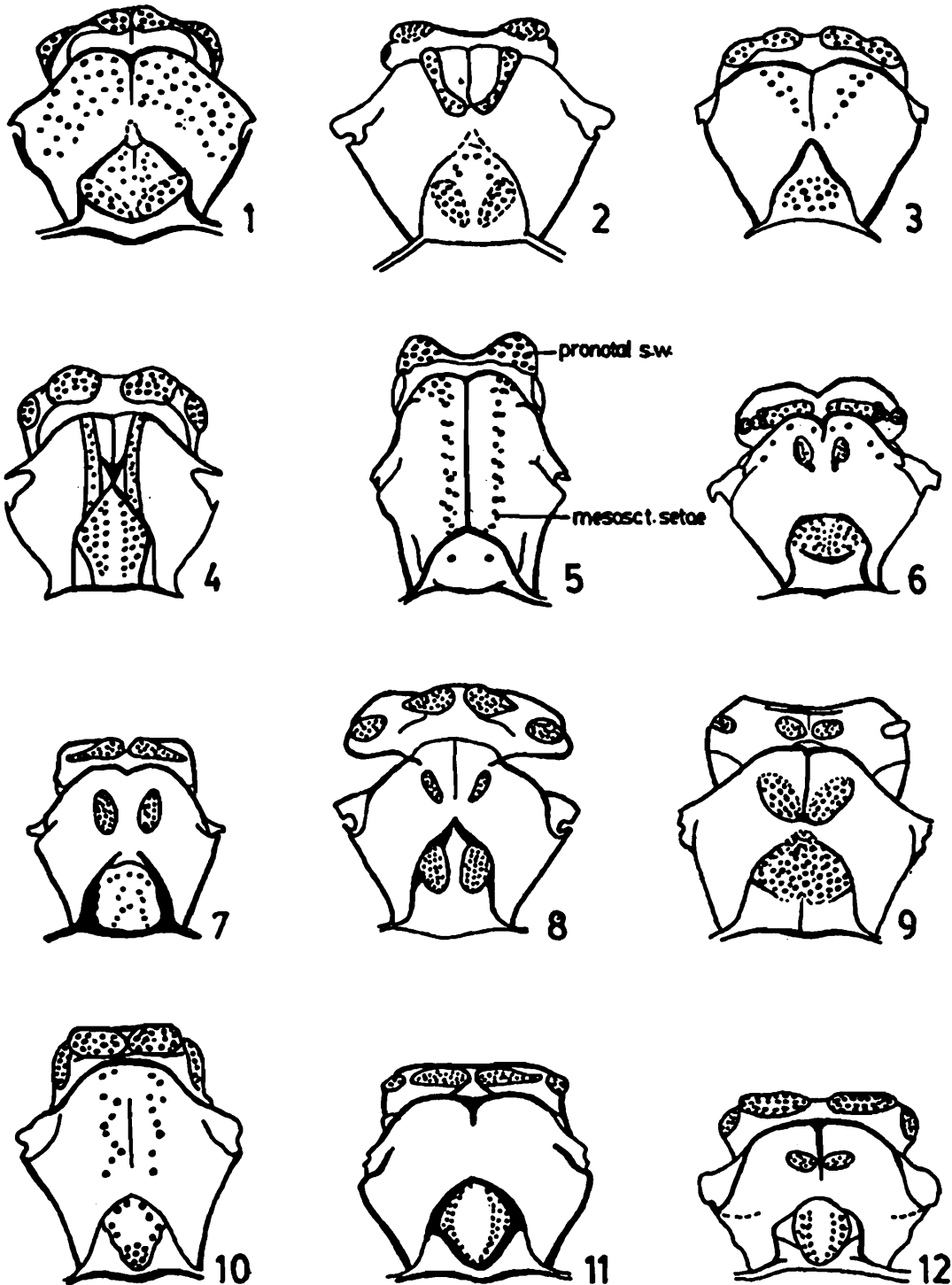
Key to the Families from India

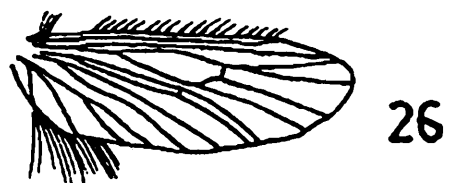
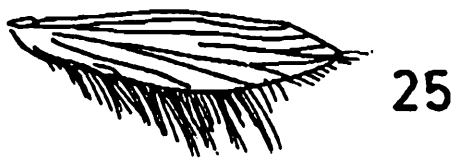
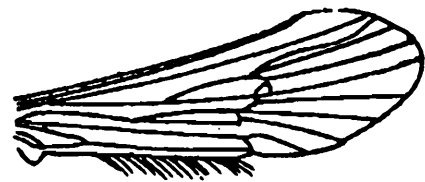
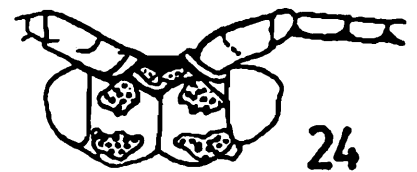
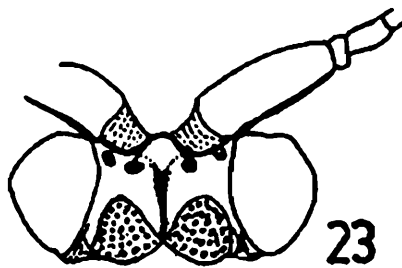
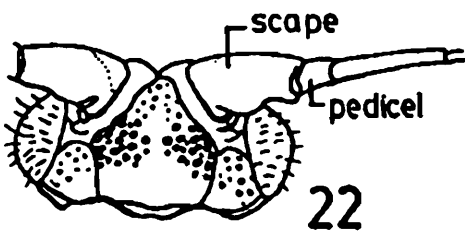
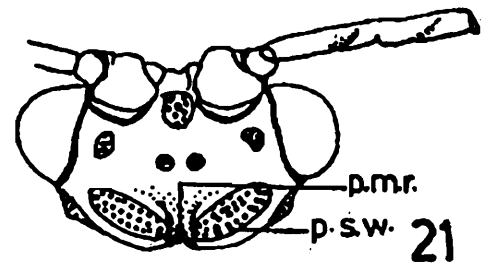
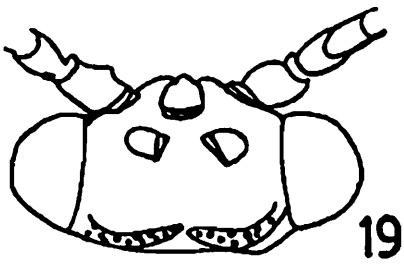
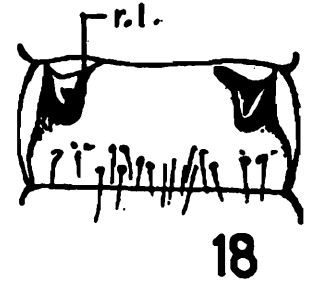
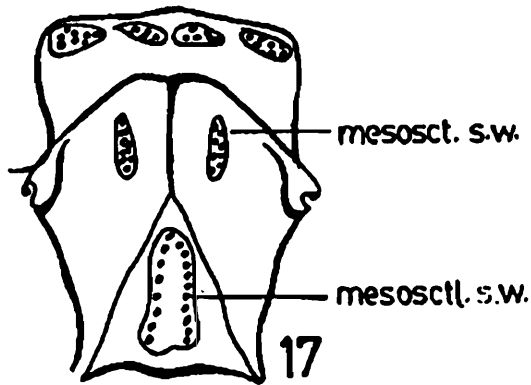
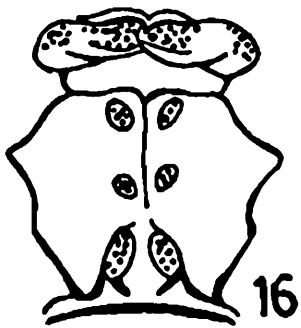
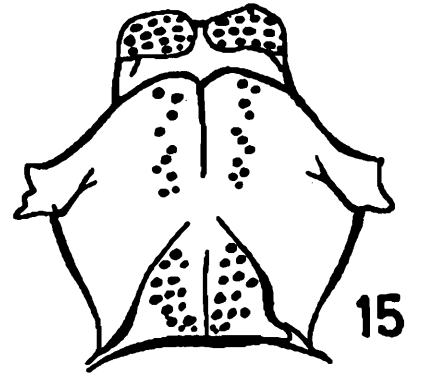
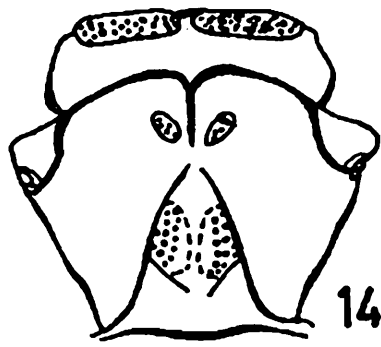
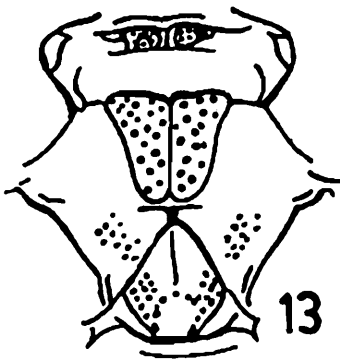
1. Small insects, usually 5 mm or less in length, mesoscutum lacking setal warts, mesoscutellar setal warts transverse and meeting mesally to form an angulate ridge (Fig. 1); hind wing narrow and apically acute (Fig. 25); often with a posterior fringe of long setae, the longest approximately the width of hind wing *Hydroptilidae*
- 1' Insects usually more than 5 mm long; mesoscutum frequently with setal warts (Fig. 2) mesoscutellar setal warts usually rounded or elongate (Fig. 3,4); hind wing usually broader and rounded apically (Fig. 26); posterior fringe when present of relatively short setae 2
- 2.(1') Ocelli present 3
- 2' Ocelli absent 12
- 3.(2') Maxillary palp 5 segmented, terminal segment flexible, usually at least twice as long as the preceding segment (Fig. 37) 4
- 3' Maxillary palp 3, 4 or 5 segmented, terminal segment similar to others in structure, sub equal to the preceding segment (Fig. 38) 5
- 4.(3) Middle leg flat, ocelli close and well developed (Fig. 19) *Stenopsychidae*
- 4' Middle leg not flat; ocelli widely separated and reduced (Fig. 20) *Philopotamidae*
- 5.(3') Maxillary palp 5 segmented, 2nd segment short, often rounded and approximately of the same length as the first segment (Fig. 38) 6
- 5' Maxillary palp 3, 4 or 5 segmented, 2nd segment slender and longer than first 8
- 6.(5) Maxillary palp with 2nd segment rounded or globose (Fig. 38) 7
- 6' Maxillary palp with 2nd segment not globose, but of same cylindrical shape like first (Fig. 41) *Hydrobiosidae*

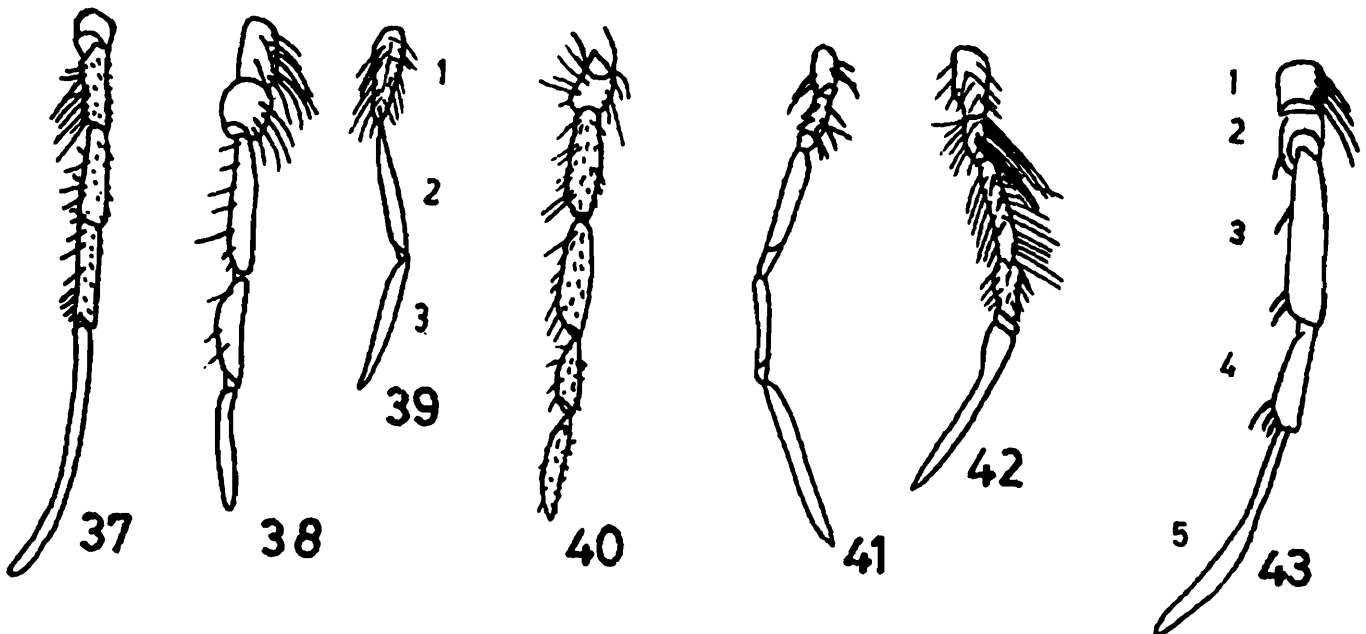
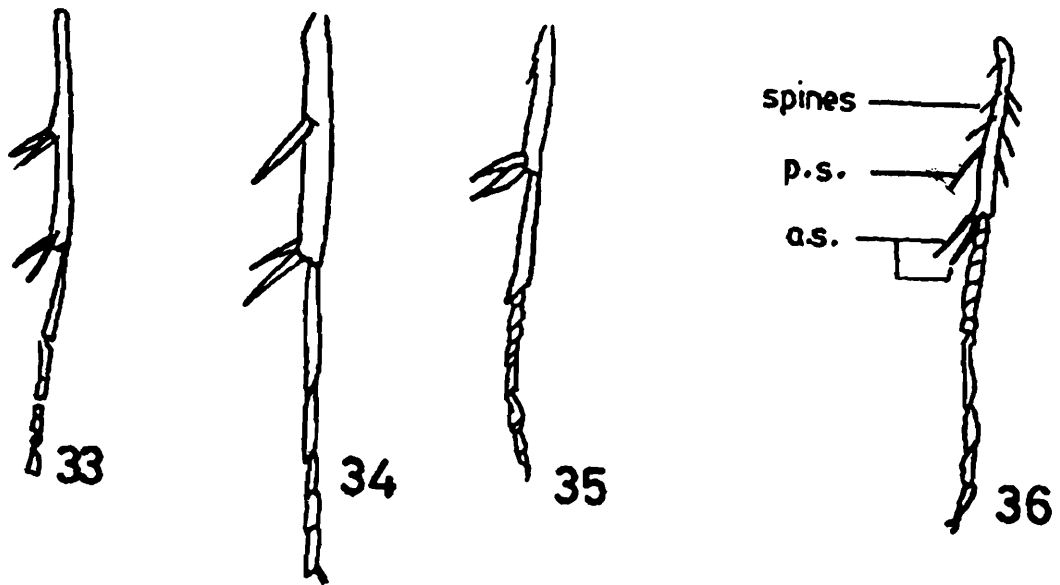
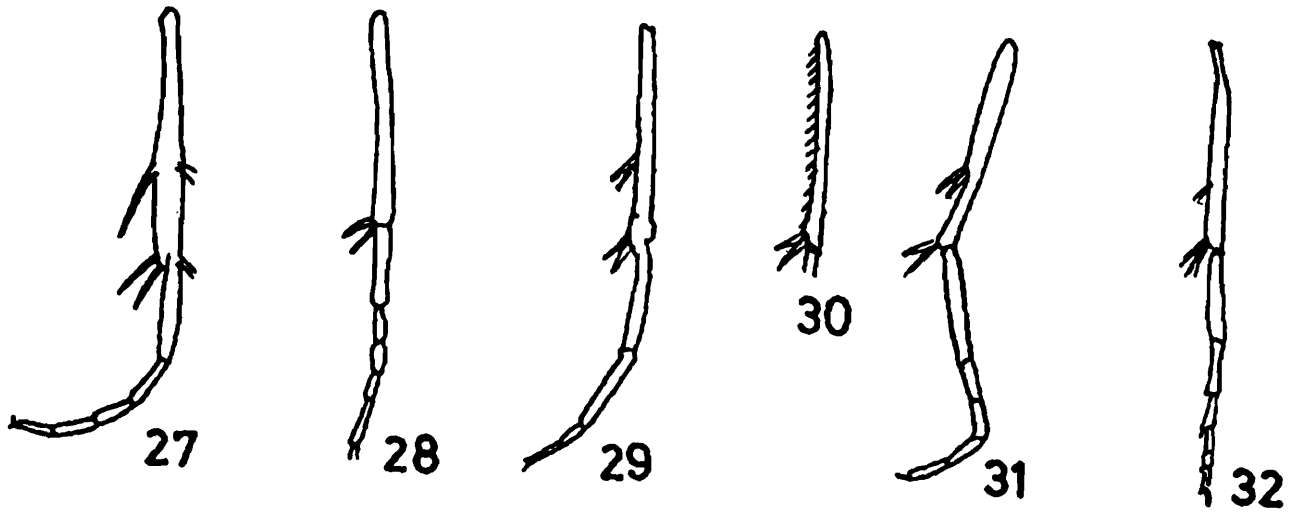
- 7.(6) Foretibia with a preapical spur (Fig. 27) *Rhyacophilidae*
 7' Foretibia lacking a preapical spur (Fig. 28) *Glossosomatidae*
- 8.(5') Middle tibia with 2 prepical spurs (Fig. 29)..... 9
 8'. Middle tibia with 1 or no prepical spur 11
- 9.(8) Mesoscutellum with a pair of elongate or rounded setal warts (Fig. 14) 10
 9'. Mesoscutellum with setae scattered over much of the area (Fig. 15) *Phyryganeidae*
- 10.(9) Mesoscutum with a pair of elongate setal warts (Fig. 14) *Phryganopsychidae*
 10' Mesoscutum with 2 pairs of ovoid setal warts (Fig. 16) *Limnocentropodidae*
- 11.(8') Anterior edge of hind wing with a row of stout, hooked setae (Fig. 26) *Uenoidea*
 11' Anterior edge of hind wing lacking row of stout hooked setae, although straight or slightly curved normal setae present *Limnephilidae*
- 12.(2') Maxillary palp with 5 or more segments (both sexes) 13
 12' Maxillary palp with less than 3 segments (males only) 21
- 13.(12) Terminal segment of maxillary palp similar to others and usually of approximately the same length as preceding segment (Fig. 39) or some segments with long setae 14
 13' Terminal segment of maxillary palp flexible, with numerous cross-striae and different in structure from the preceding segment, usually at least twice as long as the preceding segment (Fig. 43) 24
- 14.(13) Mesoscutal setae arising in diffuse area over almost the entire length of mesoscutum (Fig. 5) 15
 14'. Mesoscutal setae largely confined to pair of small discrete warts (Fig. 6) 17
- 15.(14) Antennae with scape almost twice as long as pedicel; dorsum of head usually with posteromesal ridge (Fig. 21) *Calamoceratidae*
 15' Antennae with scape atleast 3 times longer than pedicel; dorsum of head lacking posteromesal ridge (Fig. 22) 16
- 16.(15') Antennae much longer than body; middle tibia lacking preapical spurs (Fig. 30) *Leptoceridae*
 16'. Antennae short, if longer than body; middle tibia with 2 preapical spurs (Fig. 31) *Molannidae*
- 17.(14) Dorsum of head with posterior setal warts very large, extending from mesal margin of eye to mid-dorsal line and anteriorly to middle of head, (Fig. 23); antenna never longer than fore wing *Helicopsychidae*

- 17' Dorsum of head with posterior setal wart small; antennae $1\frac{1}{2}$ times longer than fore wing 18
- 18.(17') Mesoscutellum with 1 mesal setal wart (Fig. 7) 19
- 18' Mesoscutellum with a pair of setal warts (Fig. 8), although sometimes touching along the middorsal line (Fig. 12) 20
- 19.(18) Mesoscutellum almost entirely covered by a single setal wart, setal wart, setae arising over most of wart (Fig. 7)..... *Odontoceridae*
- 19' Mesoscutellum with setal wart narrower, setae largely confined to periphery (Fig. 10) *Goeridae*
- 20.(18') Middle tibia with 1 or 2 preapical spurs arising at a point which is at about one-third distance from tip of tibia (Fig. 32) or without preapical spur; abdomen with openings of glands on venter V in a pair of rounded sclerotized lobes (Fig. 18).....*Brachycentridae*
- 20'. Middle tibia with 2 preapical spurs arising from approx. midpoint of tibia (Fig. 33); abdomen with glands on venter V not apparent *Lepidostomatidae*
- 21.(12') Dorsum of head with posterior setal warts very large, extending from mesal margin of eye to middorsal line and anteriorly to middle of head (Fig. 23) antennae never longer than fore wing*Helicopsychidae*
- 21' Dorsum of head with posterior setal wart smaller than above; or antennae $1\frac{1}{2}$ times longer than fore wing 22
- 22.(21') Mesoscutellum with one mesal setal wart (Fig. 10) *Goeridae*
- 22'. Mesoscutellum with a pair of setal warts, although sometimes touching along the middorsal line (Fig. 12) 23
- 23.(22') Middle tibia with 1 or 2 preapical spurs arising at a point about one-third distance from tip of tibia (Fig. 32) or without preapical spurs; abdomen with openings of glands on venter V in a pair of rounded sclerotized lobes (Fig. 18)*Brachycentridae*
- 23' Middle tibia with 2 preapical spurs arising from approximately midpoint of tibia (Fig. 33). abdomen with glands on venter V not apparent..... *Lepidostomatidae*
- 24.(13') Pronotum large and collar-like, with a deep median fissure *Dipseudopsidae*
- 24' Pronotum not collar like and without deep median fissure 25
- 25.(24) Mesoscutum lacking setal warts or setae (Fig. 11) *Hydropsychidae*
- 25' Mesocutum with setal warts (Fig. 12) 26
- 26.(25') Mesoscutal setal warts quadrate and appressed along the median line over a large area approximately the size of entire mesoscutellum (Fig. 13) *Xiphocentronidae*

- 26'. Mesoscutal setal warts circular, sometimes touching at the median line, but much smaller than the mesocutellum (Fig. 14) 27
- 27.(26') Length of basitarsus less than twice the length of longer apical spur (Fig. 34) 28
- 27' Length of basitarsus at least twice the length of longer apical spur (Fig. 35)
 *Psychomyiidae*
- 28.(27) Fore wing with R₁ not branched; mesoscutellum with single rounded mesal setal wart
 *Polycentropodidae*
- 28. Fore wing with R₁ branched; mesoseutellum with pair of rounded setal warts *Ecnomidae*







EXPLANATION TO FIGURES**Figures 1-17. Dorsal view of typical pro- and mesonotum of adults of**

- | | | |
|------------------------|-----------------------|-----------------------|
| 1. Hydroptilidae | 2. Glossosomatidae | 3. Rhyacophilidae |
| 4. Hydrobiosidae | 5. Leptoceridae | 6. Helicopsychidae |
| 7. Odontoceridae | 8. Brachycentridae | 9. Lepidostomatidae |
| 10. Linnephilidae | 11. Hydropsychidae | 12. Polycentropodidae |
| 13. Xiphocentronidae | 14. Phryganopsychidae | 15. Phryganeidae |
| 16. Limnocentropodidae | 17. Uenoidae | |
18. Ventral view of abdominal segment V of Brachycentridae adult.

Figures 19-24 : Dorsal view of the typical head of adult of

- | | | |
|--------------------|---------------------|---------------------|
| 19. Stenopsychidae | 20. Philopotamidae | 21. Calamoceratidae |
| 22. Leptoceridae | 23. Helicopsychidae | 24. Odontoceridae |

Figures 25-26 : Dorsal view of the wings of

- | | |
|-------------------|--------------|
| 25. Hydroptilidae | 26. Uenoidae |
|-------------------|--------------|
27. Tibia and tarsus of foreleg of Rhyacophilidae
 28. Tibia and tarsus of foreleg of Glossosomatidae
 29. Middle tibia and tarsus of Phryganeidae
 30. Middle tibia of Leptoceridae
 31. Middle tibia and tarsus of Molannidae
 32. Middle tibia and tarsus of Brachycentridae
 33. Middle tibia and tarsus of Lepidostomatidae
 34. Foretibia and tarsus of Polycentropodidae
 35. Foretibia and tarsus of Psychomyiidae
 36. Middle tibia and tarsus of Linnephilidae

Figures 37-43 : Maxillary palp of

- | | | |
|--------------------------|---------------------|------------------------|
| 37. Philopotamidae | 38. Glossosomatidae | 39. Linnephilidae male |
| 40. Linnephilidae female | 41. Hydrobiosidae | 42. Odontoceridae |
| 43. Polycentropodidae | | |

ABBREVIATIONS

- | | | |
|-------------------|---|-----------------------|
| 1. Pronotal s.w. | — | Pronotal setal wart |
| 2. Mesosct. setae | — | mesoscutal setae |
| 3. mesosct. s.w. | — | mesoscutal setal wart |

- | | | | |
|----|----------------|---|--------------------------|
| 4. | mesosctl. s.w. | — | mesoscutellar setal wart |
| 5. | r.l. | — | rounded lobe |
| 6. | p.m.r. | — | posteromesal ridge |
| 7. | p.s.w. | — | posterior setal wart |
| 8. | p.s. | — | preapical spur |
| 9. | a.s. | — | apical spurs. |

ACKNOWLEDGEMENTS

The authors are thankful to Late Dr. F. Schmid (Ottawa), Dr. G. B. Wiggins (Toronto), Dr. O. S. Flint (Washington), Dr. T. Nozaki (Japan), Dr. H. Malicky (Austria), Dr. R. Holzenthal (Minnesota), Dr. J. Weaver (New Hampshire) and Dr. R. Blahnik (New Jersey) for literature, valuable advice on the preparation of this manuscript. Some of the illustrations are modified from Merritt and Cummins, for which we are thankful to the Royal Ontario Museum, Canada.

REFERENCES

- Banks, N. 1911. Notes on Indian Neuropteroid Insects. *Proc. Ent. Soc. Washington*, **13** : 99-106.
- Botosaneanu, L. 1979. Sur une nouvelle espece d' *Uenoa* de l' Himalaya Central, et sur la remarquable maniere dont les femelles prolegent leur ponte. (Trichoptera; Uenoidea). *Ent. Ber. Amsterdam*, **39** : 141-144.
- Fischer, F. C. J. 1960-1973. Trichopterorum catalogus. Vol I/XV. *Ned. Ent. Veren. Amsterdam*.
- Higler, L. W. G. 1992. A Check-list of the Trichoptera recorded from India and a larval key to the families. *Oriental Insects*, **26** : 67-108.
- Kimmins, D. E. 1950. Indian Caddisflies II. The genus *Phryganopsis* Martynov. *Ann. Mag. nat. Hist.*, **3** : 696-705.
- Kimmins, D. E. 1952. Indian Caddisflies III. New genera and species of the family Limmephilidae. *Ann. Mag. nat. Hist.*, **1230** (35) : 905-934.
- Kimmins, D. E. 1953. Entomological Results from the Swedish Expedition 1934 to Burma & British India. Trichoptera : (Rhyacophilidae, subfamilies Hydrobiosinae, Glossosomatinae and Agapetinae). *Arkiv f ir Zoologi*, **6** (8) : 167-183.
- Kimmins, D. E. 1955. Indian caddisflies VI. New species and a genus of the subfamily Rhyacophilinae. *Ann. Nag. Nat. Hist.*, **12** (5) : 347-361.
- Kimmins, D. E. 1957. Entomological results from the Swedish expedition 1934 to Burma & British India. Trichoptera. The genus *Chimarra* Stephens (Fam. Philopotamidae) *Arkiv f ir Zoologi*, **2** (6) : 53-75.
- Kimmins, D. E. 1963. On the Leptocerinae of the Indian subcontinent & North East Burma. *Bulletin of the British Museum (N. H.) Entomology*, **14** : 261-316.

- Mani, M. S. Modern classification of insects. Satish Book Enterprise, Agra. pp. 176-180.
- Martynov, A. V. 1935. On a collection of Trichoptera from the Indian Museum Part I Annulipalpia. *Rec. Indian Mus.*, **37** : 93-139.
- Martynov, A. V. 1936. On a collection of Trichoptera from the Indian Museum. Part II Integripalpia. *Rec. of Indian Mus.* **38** : 239-306.
- Morton, K. J. 1900. Descriptions of new species of Oriental Rhyacophilidae. *Trans. Ent. Soc. Lond.*, Part I pp. 1-7.
- Mosely, M. E. 1935. The Indian Caddisflies. *J. Bombay nat. Hist. Soc.*, **38** : 123-133.
- Mosely, M. E. 1938. The Indian Caddisflies. *J. Bombay nat. Hist. Soc.*, **40** (3) : 486-496.
- Mosely, M. E. 1939. The Indian Caddisflies VI. *J. Bombay nat. Hist. Soc.*, **41** : 45-46.
- Navas, L. 1916. Neuropteros nuevos o Poco conocidos (Septima Serie). *Memorias de la Real Academia de Ciencias y Artes de Barcelona*, **12** (13) : 25-26.
- Navas, L. 1917. Trichopteros de Espana (Tercera Serie) *Broteria (Praga.)* **15** : 64-66.
- Parker, C. R. & Wiggins G. B. 1987. Revision of the Caddisfly genus *Psilotreta* (Trichoptera : Odontoceridae) *Life. Sci. Contrib., Royal Ontario Mus.*, **144** : 1-55.
- Ross, H. H. 1959. Trichoptera. In *Fresh Water Biology*, ed. by W. T. Edmonson, New York. John Wiley and Sons. Inc. pp. 1024-1049; 17f.
- Schmid, F. 1949. Les Trichopteres de la collection Navas. *Eos*, **25** : 412-416.
- Schmid, F. 1962. Le genre *Eubasilissa* Mart. en Inde (Phryganeidae : Trichoptera). *Bull. Soc. Vaud. Sc. Nat.*, **68** : 153-168.
- Schmid, F. 1963. Quelques *Himalopsyche* indiennes (Trichopteres, Rhyacophilidae). *Bonner zool. Beitr.*, **14** : 206-223.
- Schmid, F. 1964. Quelques Trichopteres asiatiques *Canadian Ent.*, **96** : 825-840.
- Schmid, F. 1965(a). D'etranges Goerides, Les *Larcasia Navas* (Trichoptera). *Ent. Ts. Arg.*, **86** : 260-265.
- Schmid, F. 1965(b). Encore une *Eubasilissa himalayene* (Trichopteral; Phryganeidae). *Canadian Ent.*, **97** (1) : 108-109.
- Schmid, F. 1966(a). A propos des limites de la zone palearotique dans l' Himalaya ou les Limnophilines en Inde (Trichoptera). *Acta. Zool. Hungarica*, **12** : 363-369.
- Schmid, F. & Botosaneanu, L. 1966(b). Le genre *Himalopsyche* Banks (Trichoptera : Rhyacophilidae). *Ann. Soc. Ent. Quebec*, **11** : 123-176.
- Schmid, F. 1968(a). La famille des Arctopsychides (Trichoptera) *Mem. Soc. Ent. Quebec*, **1** : 1-84.
- Schmid, F. 1968(b). Le genre *Poecilopsyche* n. gen (Trichoptera, Leptoceridae). *Ann. Soc. Ent. Quebec*, **13** : 3-31.

- Schmid, F. 1968(c). Les genre *Neurocyta* Navas and *Phryganopsyche* Wiggins en Inde. *Naturaliste Canadien*, **95** : 723-726.
- Schmid, F. 1968(d). Le genre *Gunungiella* Ulmer (Trichopteres : Philopotamides). *Canadian Ent.*, **100** : 897-957.
- Schmid, F. 1968(e). La sous-famille des *Apataniines* en Inde (Trichoptera, Limnophilidae). *Canadian Ent.*, **100** : 1233-1277. Including supplement. Les jeunes stades les Moropsychini.
- Schmid, F. 1969. La famille des Stenopsychides (Trichoptera). *Canadian Ent.*, **101** : 187-224.
- Schmid, F. 1970(a). Sur quelques *Apsilochorema* orientaux (Trichoptera; Hydrobiosidae). *Tijdschr. V. Ent.*, **113** : 261-271.
- Schmid, F. 1970(b). Le genre *Rhyacophila* et la famille des Rhyacophilidae (Trichoptera). *Mem. Soc. Ent. Canada*, **66** : 1-230.
- Schmid, F. 1971. Quelques nouveaux *Glossosoma* Orientaux (Trichoptera : Glossosomatidae). *Naturaliste Candien*, **98** : 607-631.
- Schmid, F. 1972. Sur quelques nouvelles *Psychomyiines* tropicales (Trichoptera : Psychomyiidae). *Naturaliste Candien*, **99** : 143-172.
- Schmid, F. 1982. La Famille des Xiphocentronides (Trichopters : Annulipalpia). *Mem. Soc. Ent., Canada*, **121** : 1-127.
- Schmid, F. 1983. Encore quelques *Stactobia* McLachlan (Trichoptera; Hydroptilidae). *Naturalise Candien (Rev. Ecol. Syst.)*, **110** : 239-283.
- Schmid, F. 1984. Essai d'evaluation de la faune mondiale des Trichopteres. *Proc. 4th Internat. Symp. Trichoptera. Dr. W. Junk pub. The Hague.*, P. 337.
- Schmid, F. 1987. Considerations diverses sur quelques genres leptocerins. *Bull. Inst. R. Sci. nat. Belgique (Ent.)*. **57** (supplement) 1-147, 29 pl.
- Schmid, F. 1991(a). Les *Goerides* en Inde (Trichoptera : Integripalpia). **24** (4) : 305-326.
- Schmid, F. 1991(b). La sous famille les Pseudostenophylanes (Trichoptera, Limnophilidae). *Bull. Inst. R. Sci. nat. Belgique (Ent.)*. **61** (supplement) : 1-68, 13 pl.
- Schmid, F. 1992. Les Brachycentrides en Inde (Trichoptea Integripalpia). *Bijdr. Dierk.*, **62** (2) : 99-109.
- Schmid, F. 1993. Considerations sur les Helicopsychides (Trichoptera : Integripalpia). *Beaufortia*. **43** (5) : 65-100.
- Schmid, F. 1994(a). Les *Adicella* du groupe de pulcherrima (Trichoptera : Integripalpia, Leptoceridae) *Faberies* **19** (2) : 57-44.
- Schmid, F. 1994(b). Quelques *Adicella* indiennes (Trichoptera. Leptoceridae). *Faberies*. **19** (4) : 85-127.

- Schmid, F. 1994(c). Le genre *Triaenodes* McLachlan en Inde (Trichoptera : Leptoceridae). *Faberies*, **19** (1) : 1-11.
- Schmid, F. 1997. Le genre *Psychomyia* en Inde (Trichoptera : Pschyomyiidae). *Faberies* **22** (1-2) : 1-56.
- Ulmer, G. 1955. *Kocherfliegen* (Trichoptera) von den Sunda-Inseln. Teil II. *Arch. Hydrobiol., Suppl.*, **21** : 408-608.
- Ulmer, G. 1957. *Kocherfliegen* (Trichoptera) von den Sunda-Inseln. Teil III. *Arch. Hydrobiol., Suppl.*, **23** : 109-170.
- Wiggins, G. B. 1959. A new family of Trichoptera from Asia. *Candian Ent.*, **91** : 745-757.
- Wiggins, G. B. 1968. Contributions to the systematics of the Caddisfly family Molannidae in Asia (Trichoptera). *Life Sci. Contrib., Royal Ontario Mus.*, **12** : 1-26.
- Wiggins, G. B. 1978. Trichoptera. In R. W. Merritt and K. W. Cummins (Eds.) *An Introduction to Aquatic Insects of North America*. Dubuque, Iowa; Kendall/Hunt. pp. 147-185.
- Wiggins, G. B. 1982. Trichoptera. *Synopsis and Classification of Living Organisms*. pp. 599-612.