



*Rec. zool. Surv. India* : 108(Part-1) : 63-65, 2008

**A NEW SPECIES OF *MISUMENA* SPIDER  
(ARANEAE : THOMISIDAE) FROM JABALPUR,  
MADHYA PRADESH, INDIA**

U. A. GAJBE\*

*Zoological Survey of India, Central Regional Station, Jabalpur-482 002*

**INTRODUCTION**

The genus *Misumena* was established by Latreille, 1804 with the type species *Misumena vatia* (Clerck). Since the establishment of the genus *Tikader* (1980) in the *Fauna of India, Spiders*, described nine species from India.

A new species *Misumena ritujae* sp. nov. is being described here in from Jabalpur. The type-specimen will be deposited in due course in the National Zoological Collection, Zoological Survey of India, Kolkata.

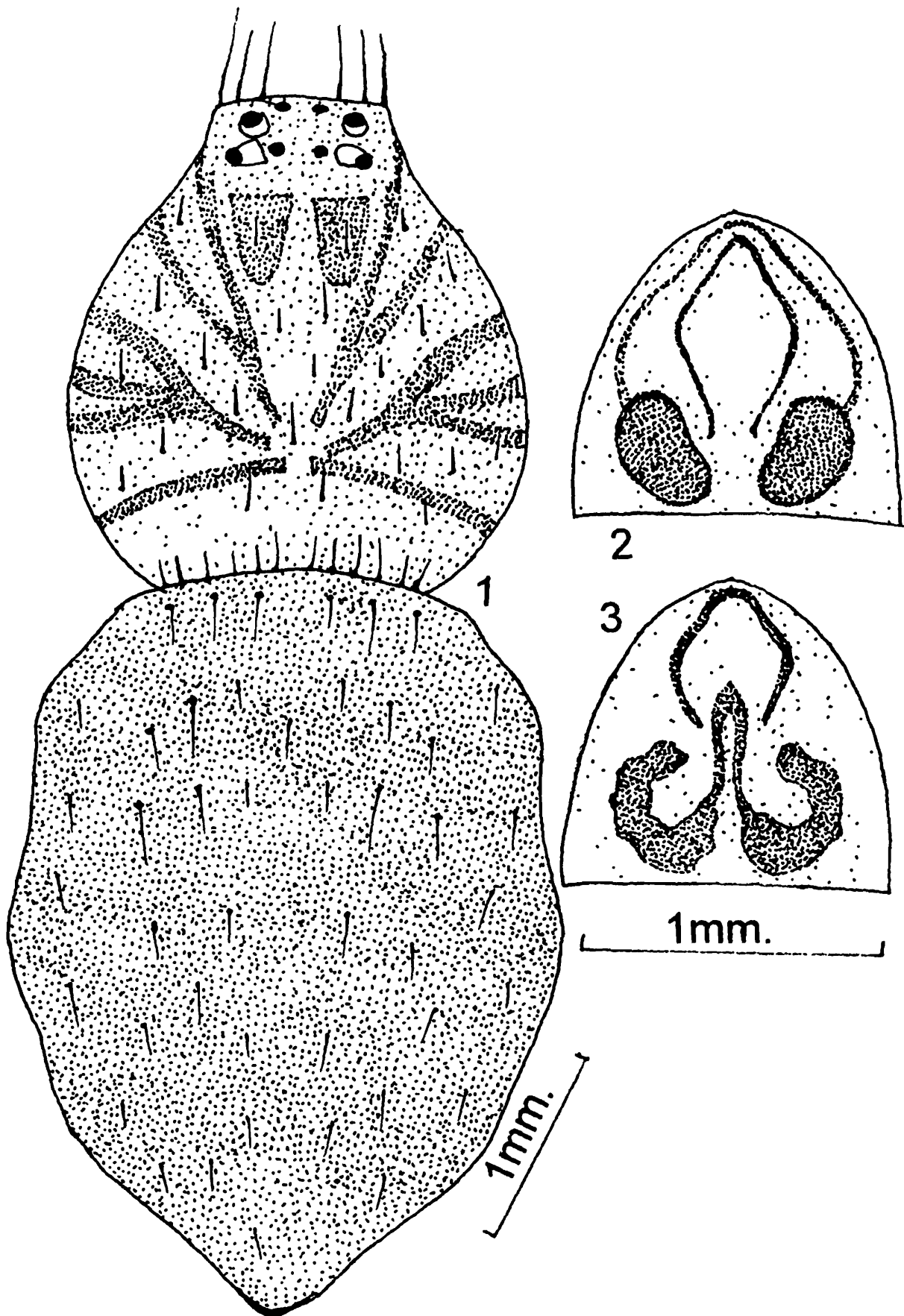
***Misumena ritujae* sp. nov.**

**General** : Cephalothorax and legs light yellowish-green, abdomen light brownish green. Total length 6.00 mm. Carapace 3.00 mm. long. 2.50 mm. wide; Abdomen 3.50 mm. long, 2.70 mm. wide.

**Cephalothorax** : Slightly longer than wide, narrowing in front, brown patches to lateral sides and two triangular light brown patches just below the posterior median eyes, armed with only very few short fine spines as in Fig. 1. Cephalic region slightly high. Both the eye rows recurved, anterior row of eyes more recurved than the posterior row. Anterior row of eyes slightly recurved, anterior medians smaller than the anterior laterals and equidistant to each other. Posterior row of eyes slightly recurved, posterior medians smaller than the posterior laterals, medians closer to each other than to adjacent laterals, both the posterior and anterior lateral eyes situated on the elevated confluent black tubercles. The median ocular area longer than wide and a little narrow in front

---

\*Present Address : Plot No. 84, Gajaran Dham, Sahakar Nagar, Nagpur-440 025



Figs. 1-3. : *Misumena ritujae* sp. nov.; 1. Dorsal view of female, legs omitted; 2. Epigyne; 3. Internal genitalia.

than behind. Clypeus high, margin provided with six long line spines Sternum heart-shaped, slightly pointed behind, clothed with fine spine like hairs. Legs I & II much longer than III & IV, clothed with conspicuous spines and fine spine like short hairs.

*Abdomen* : Longer than wide, broadest just behind the middle, clothed with long One spines. Ventral side light green in colour, provided with light brownish roundish spots. Epigyne as in Fig. 2. Internal genitalia as in Fig. 3.

*Type specimen* : *Holotype* female in spirit, other details as above.

*Type-Locality* : Tilwaraghat, Jabalpur, Coll. U.A. Gajbe, 2.IX.2006.

This species closely resembles *Misumena nicobarensis* Tikader but differs from it as follows : (i) Cephalothorax provided with light brown patches and two triangular patches but in *Misumena nicobarensis* cephalothorax provided with conspicuous broad dark brown patch to lateral sides, (ii) Abdomen uniform but in *Misumena nicobarensis* abdomen dorsally decorated with chalk-white and brown pigmented dots, (iii) Epigyne and internal genitalia also structurally different.

#### ACKNOWLEDGEMENTS

I am thankful to The Officer-in-Charge, Zoological Survey of India, Central Regional Station, Jabalpur, for facilities. Thanks also due to Shir M.E. Limje, Photographer, Central Regional Station, Zoological Survey of India, Jabalpur, for typing the manuscript.

#### REFERENCE

Tikader, B.K. 1980. *Fauna of India, Spiders*, (Thomisidae) Vol. 1(1) : 1-247.